



52D Pemberton Street Botany NSW

4 3 2

Located in one of Sydney's fastest growing urban village hotspots lies this uniquely crafted four bedroom terrace with large second lounge and stunning leafy outlook. Set over three levels, this home features stylish and intelligent design, enhancing natural light and providing fantastic liveability. A stunning family location which is in close proximity to shops, village cafes, public transport, schools, universities, beaches and Sydney CBD.

Price : \$ 2,045,000
Land Size : 239.1 sqm
View : <https://www.agentsandco.com.au/sale/nsw/eastern-suburbs/botany/residential/terrace/6728479>

The Lifestyle:

- North East facing courtyard
- Four spacious bedrooms
- Master suite with walk-in robe & ensuite
- Custom floor tiles & underfloor heating across the whole ground floor
- Free-flowing living and dining space



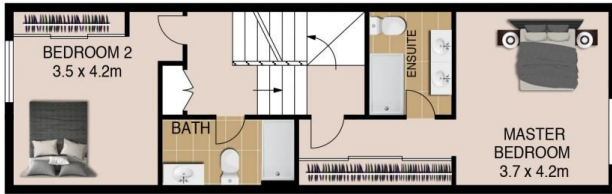
Nick Papas
02 9314 2100



Natalie Vega
02 9314 2100



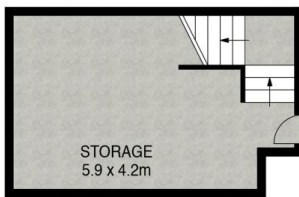
SITE PLAN
(NOT TO SCALE)



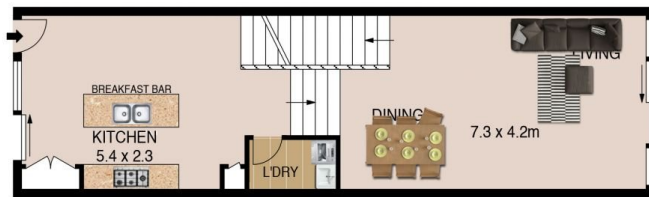
FIRST FLOOR



SECOND FLOOR



LOWER GROUND FLOOR



GROUND FLOOR



**SECURE
CARSPACE
5.3 x 5.0m**



SCALE (METRES)

PLANS SHOWN ONLY INDICATIVE OF LAYOUT. DIMENSIONS ARE APPROXIMATE.
Ref. No: 93449



52D PEMBERTON STREET

BOTANY