



14/32 Stephen Road Botany NSW

2 2 2

About the Home;

- * Split level townhouse style apartment
- * Overly spacious open plan living/ dining and kitchen area
- * Contemporary stone benchtop kitchen with gas cooking & dishwasher
- * Exquisite master suite with impeccable ensuite
- * Both bedrooms have built-in wardrobes, spacious main on the upper level
- * Internal laundry, double lock up garage, ample storage throughout with ducted a/c
- * Situated in a secure complex with beautifully maintained communal gardens & family BBQ area

The Lifestyle;

This exceptionally over-sized split level apartment exudes privacy & serenity. Situated within the premier low rise

Land Size : 189 sqm

View : <https://www.agentsandco.com.au/sale/nsw/eastern-suburbs/botany/residential/apartment/6764166>



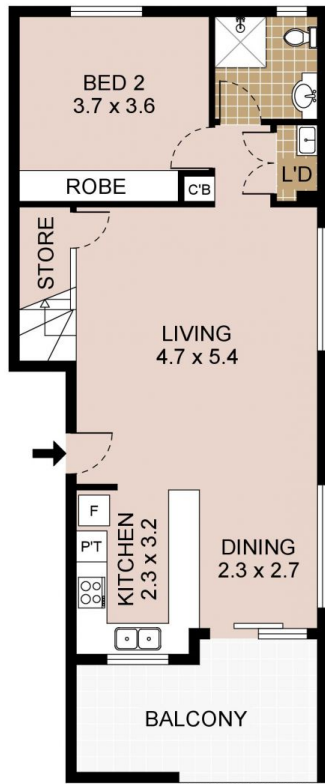
Natalie Vega
02 9314 2100



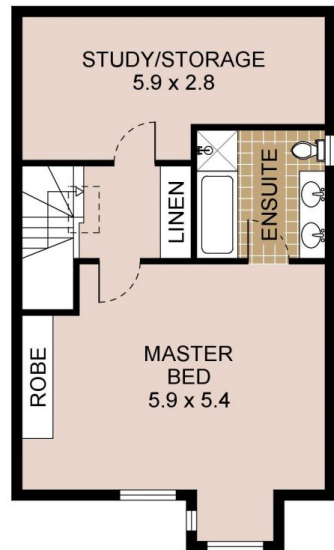
Nick Papas
02 9314 2100



LOCK-UP GARAGE
6.0 x 5.8



FIRST FLOOR



UPPER LEVEL



All information contained herein is gathered from sources we deem to be reliable. However we cannot guarantee its accuracy and interested parties should rely on their own enquiries.



14/32 STEPHEN ROAD

BOTANY