



1G/125 Boyce Road MAROUBRA NSW

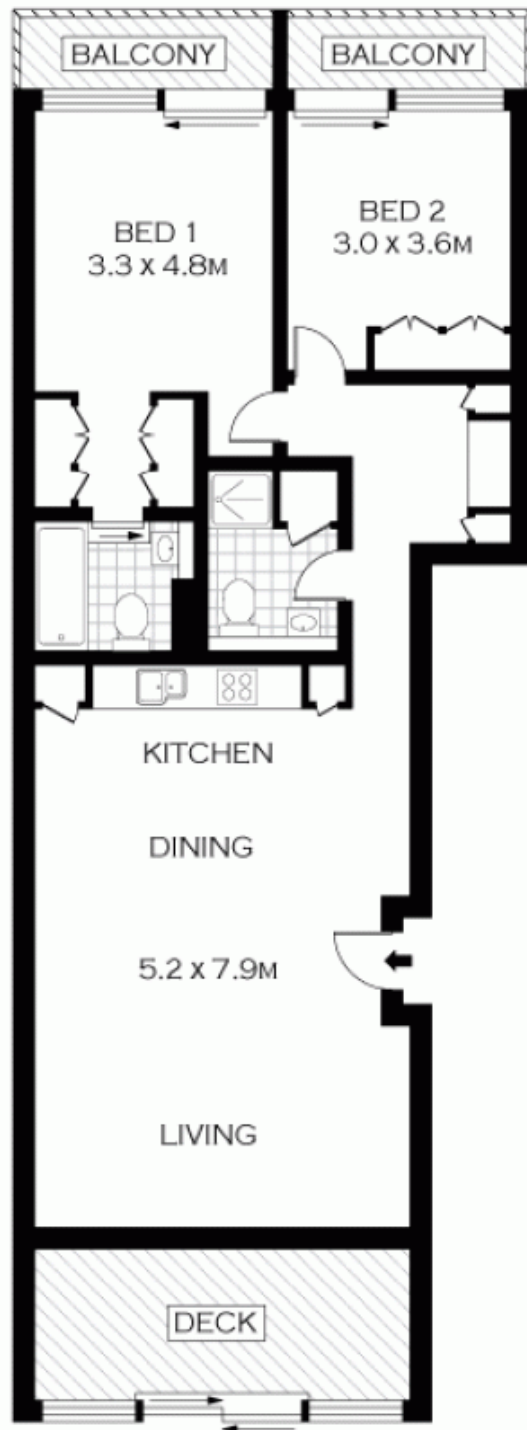
2  2  1 

Located less than 300m to the hub of Maroubra Junction is this two bedrooms security apartment with internal lift access. Offering an open plan layout, the apartment enjoys an abundance of natural light and fresh air along with great indoor/outdoor entertaining areas.

Type : Apartment

View : <https://www.agentsandco.com.au/sale/nsw/easter-n-suburbs/maroubra/residential/apartment/6767353>

- * Two good sized bedrooms (main with en suite)
- * Modern bathroom
- * Bedrooms with access to balcony
- * Modern gas kitchen with Caesar stone bench tops
- * Open plan lounge and dining
- * 2 balconies
- * Security parking
- * Currently leased at \$620 p.w.



LEVEL ONE



PLANS SHOWN ONLY INDICATIVE OF LAYOUT. DIMENSIONS ARE APPROXIMATE.
Floor plans by www.realestatemarketingaustralia.com.au
Ref. No: 4431

INT : 89M²



1G/125 BOYCE ROAD

MAROUBRA