



35 Glanfield Street MAROUBRA NSW

4 3 2

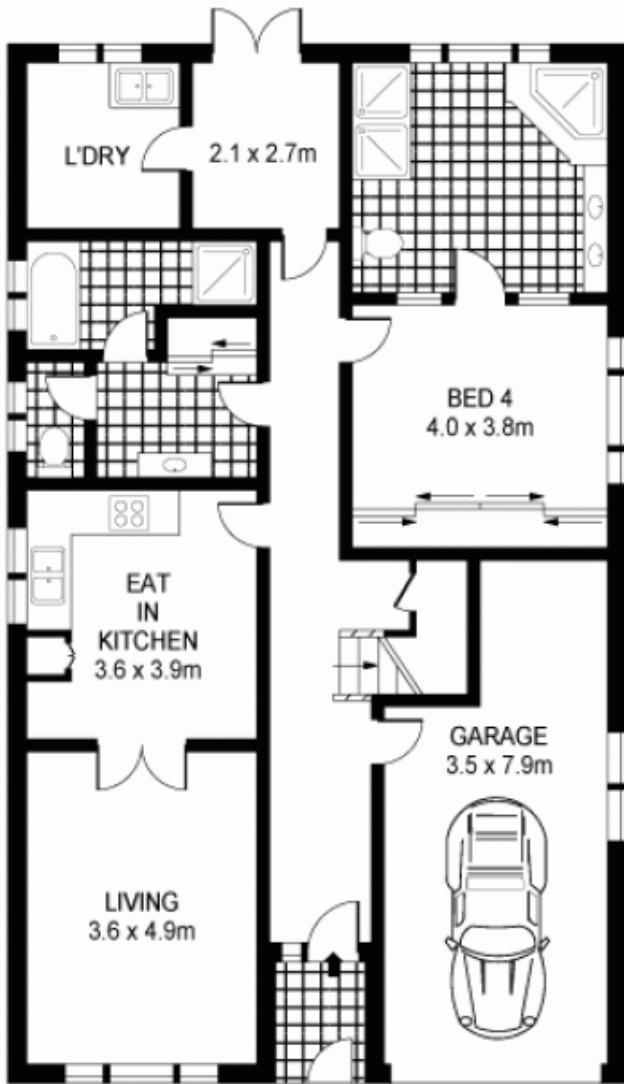
This immaculately maintained residence spans two levels and is generously proportioned throughout. Offering total comfort along with a sensible floor plan, this two storey home is designed for the family who require an abundance of space. Ideally positioned close to all major amenities, this is a golden opportunity to acquire a quality home suitable for two families.

Type : House

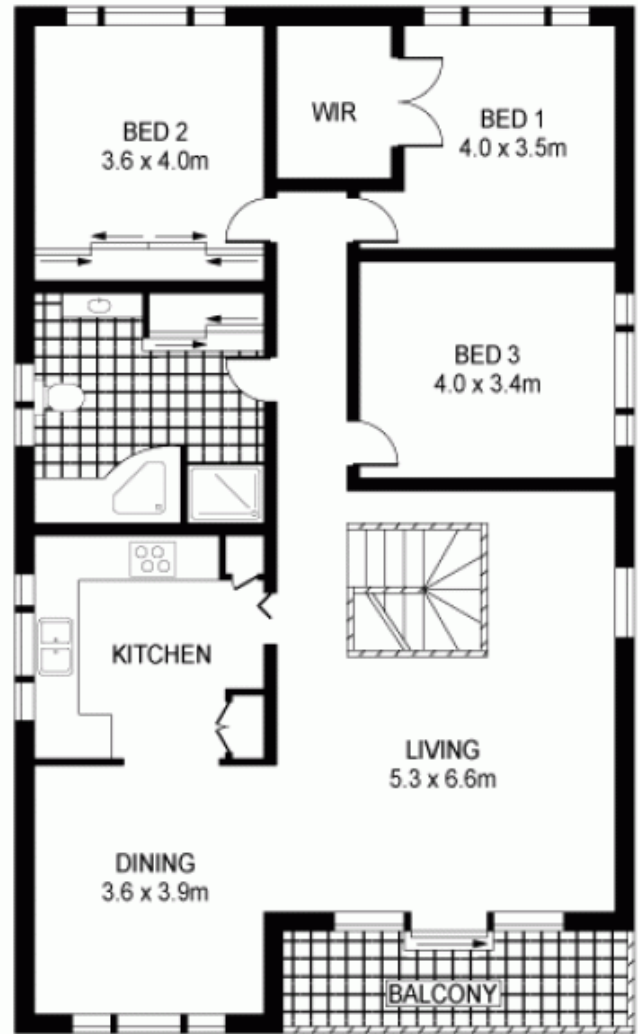
View : <https://www.agentsandco.com.au/sale/nsw/easter-n-suburbs/maroubra/residential/house/6767357>

- * 4 generous size bedrooms, 3 with built-in robes & 1 with walk-in
- * 2 lounge rooms
- * Large dining room
- * 2 spacious eat-in kitchen
- * Three huge bathrooms, each with spa bath

[For full version visit the website](#)



GROUND FLOOR



FIRST FLOOR



PLANS SHOWN ONLY INDICATIVE OF LAYOUT. DIMENSIONS ARE APPROXIMATE.
Floor plans by www.realestate.com.au

INT : 245m²



35 GLANFIELD STREET

MAROUBRA