



## 4/15 Jauncey Place HILLSDALE NSW

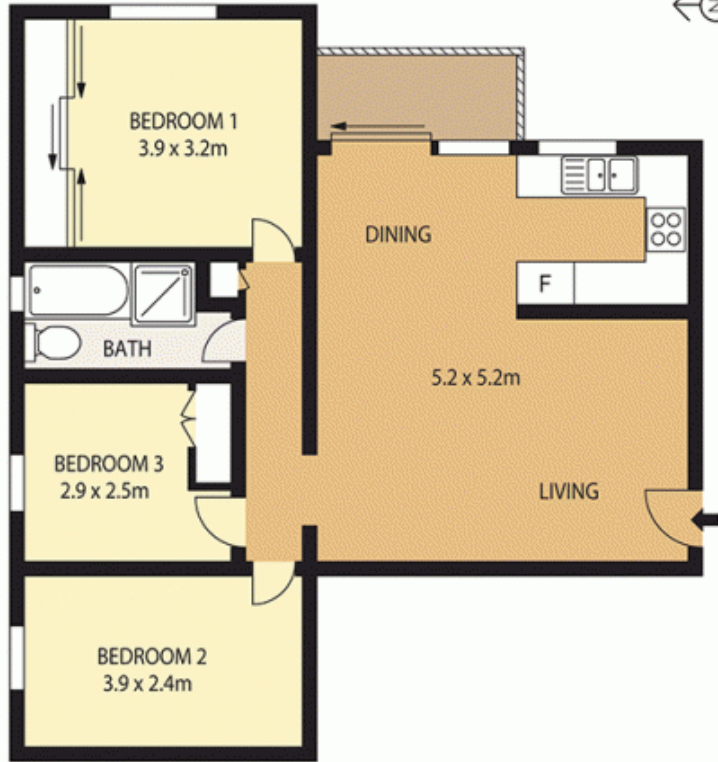
3  1  1 

Located less than 100 metres level walk to Southpoint shopping centre is this meticulously presented three bedroom apartment. Positioned on the ground floor of a well maintained small block of 12, the home would be a superb first home or solid investment with a possible income of \$500 p.w. There is not a cent to spend in this apartment.

- \* Three large bedrooms with built-in wardrobes
- \* Open plan L shape lounge and dining
- \* Modern kitchen with gas cook top
- \* Chic tiled bathroom with quality fittings
- \* Huge car space for 2 cars

**Type** : Apartment

**View** : <https://www.agentsandco.com.au/sale/nsw/easter-n-suburbs/hillsdale/residential/apartment/6767403>



4/15 Jauncey Pl HILLSDALE

DISCLAIMER: Wopasink Architectural accepts no liability for the accuracy of details contained within our floor plans. All plans are drawn and also checked to the best of our ability, however information contained in our floor plans such as area calculations are approximate, and have not been surveyed or drawn to scale. Our floor plans are not suitable for lease registration, architectural, or building purposes, they contain no structural or engineering information. Our floor plans are for representational purposes only and should be used as such. Do not attempt to refer to our floor plans for structural or detailed information.