



33 Fischer Street KINGSFORD NSW

4 2 4

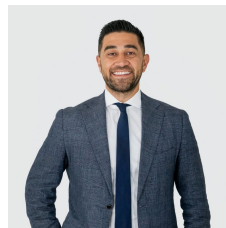
This north facing double brick freestanding residence is instantly appealing and offers an excellent opportunity to secure a solid character property in a prime location. It makes a great start to family life and is presented in good condition with well-preserved interiors, a large rear garden and lots of future potential for an update, redesign, creative renovation or a complete transformation. This central location is close to the heart of Kingsford and moments to Snape Park, shopping, restaurants and public transport.

Features:

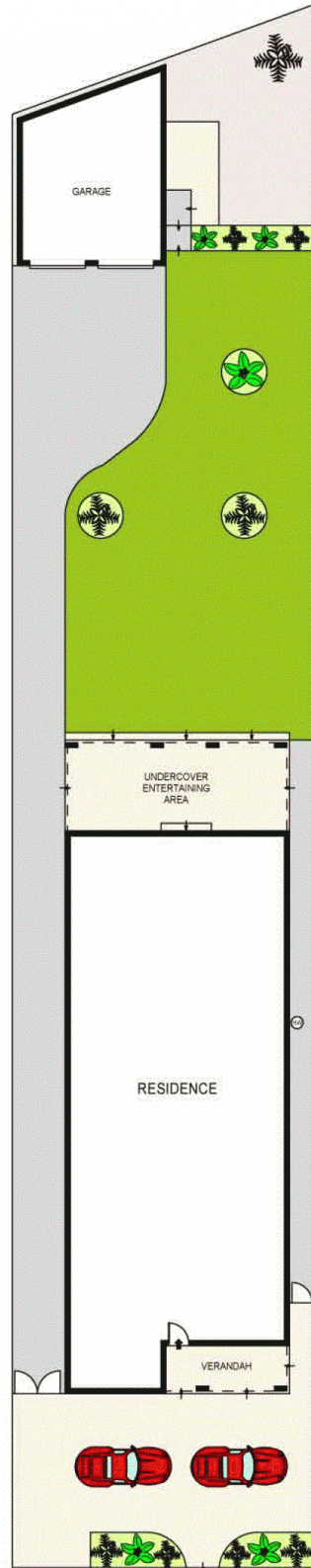
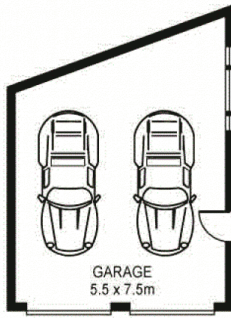
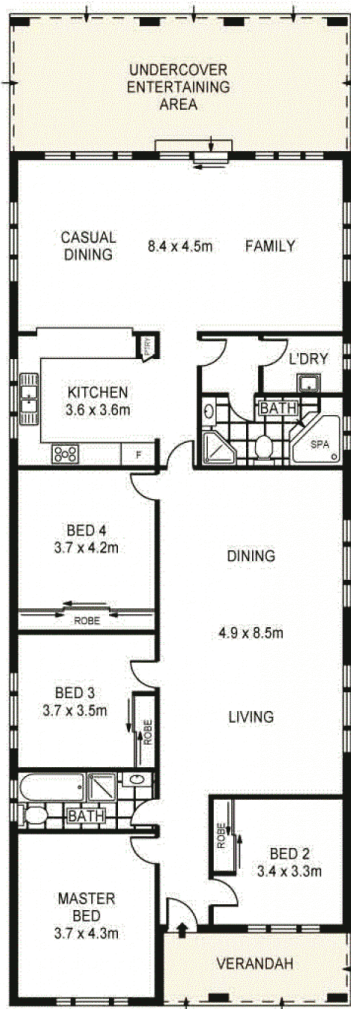
- Two combined living and dining areas, one flowing onto entertaining area
- Neat and tidy kitchen with electric cooking stove top,

[For full version visit the website](https://www.agentsandco.com.au)

Type : House
Land Size : 673 sqm
View : <https://www.agentsandco.com.au/sale/nsw/eastern-suburbs/kingsford/residential/house/6767515>



Nick Papas
02 9314 2100



SITE PLAN
(NOT TO SCALE)



SCALE (METRES)

ALL INFORMATION CONTAINED HEREIN IS GATHERED FROM SOURCES WE DEEM TO BE RELIABLE. HOWEVER WE CANNOT GUARANTEE ITS ACCURACY AND INTERESTED PARTIES SHOULD RELY ON THEIR OWN ENQUIRIES. REF. NO. 63763



33 FISCHER STREET

KINGSFORD