



20 Herford Street BOTANY NSW

4 2 1

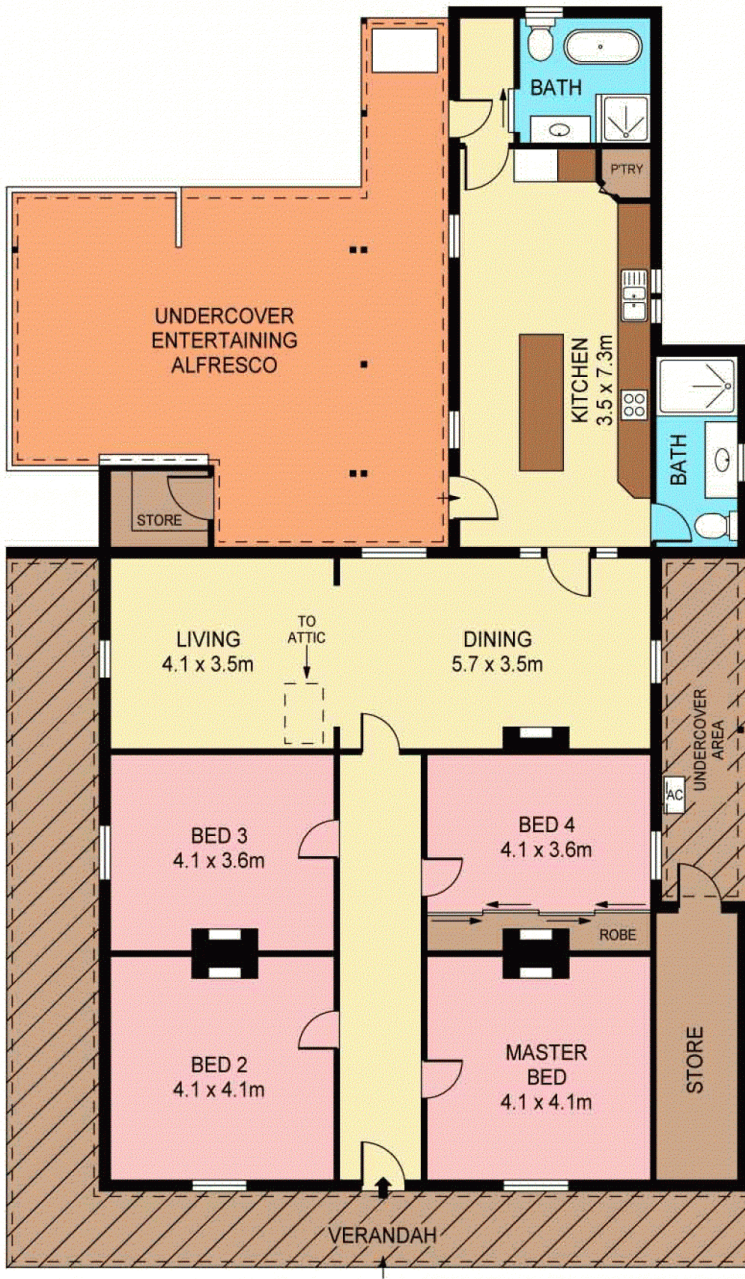
Presenting a rare opportunity to secure one of Botany's truly iconic landmark homes. This historic property offers a wealth of period charm retaining its original pristine features with some intelligent aesthetic embellishments. Enjoying a peaceful street setting this home is in walking distance to Sir Joseph Banks Park, Botany Shops, schools and public transport.

Type : House
Land Size : 471 sqm
View : <https://www.agentsandco.com.au/sale/nsw/eastern-suburbs/botany/residential/house/6767542>

Features:

- Grand formal living and dining areas with stunning fireplace
- Sun filled family room opening onto manicured outdoor area
- Private entertaining yard with pristine lawns and gardens

[For full version visit the website](#)



SITE PLAN
(NOT TO SCALE)



PLANS SHOWN ONLY INDICATIVE OF LAYOUT. DIMENSIONS ARE APPROXIMATE.
Ref. No: 64756



20 HERFORD STREET

BOTANY