



31 Metcalfe Street MAROUBRA NSW

4 2 2

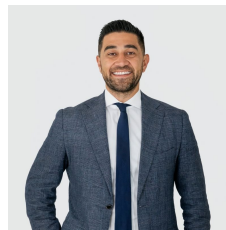
Bordering South Coogee and occupying a level 349 sqm level block, within moments to the iconic Maroubra Beach is this original dual level residence. Whilst liveable as is, the property holds enormous potential and boundless possibilities, with scope to recreate, renovate or rebuild your dream home (STCA). Within walking distance to a variety of popular cafes, schools, public transport and playing fields, this is an opportunity not to be missed.

Features:

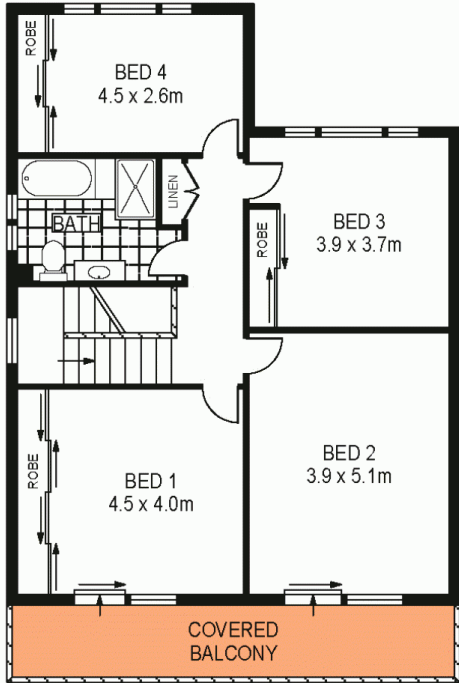
- Classic layout, separate lounge and dining areas
- Tidy eat in kitchen with electric cooking appliances
- Upper level four large bedrooms, built in wardrobes
- Bathroom with separate bathtub and internal laundry

[For full version visit the website](https://www.agentsandco.com.au)

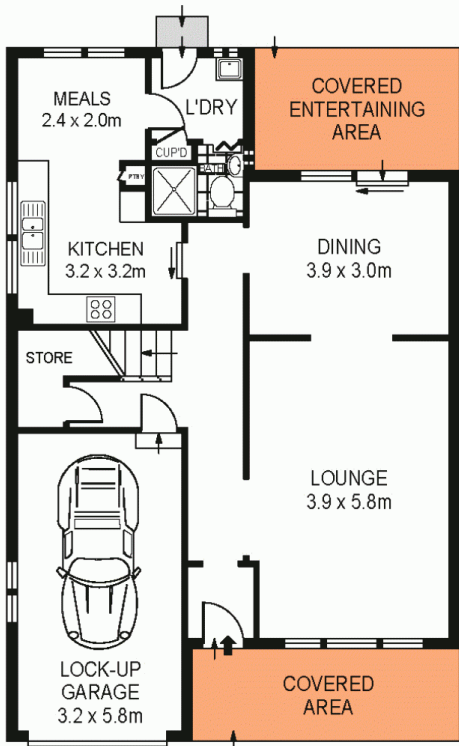
Type : House
Land Size : 349 sqm
View : <https://www.agentsandco.com.au/sale/nsw/eastern-suburbs/maroubra/residential/house/6767553>



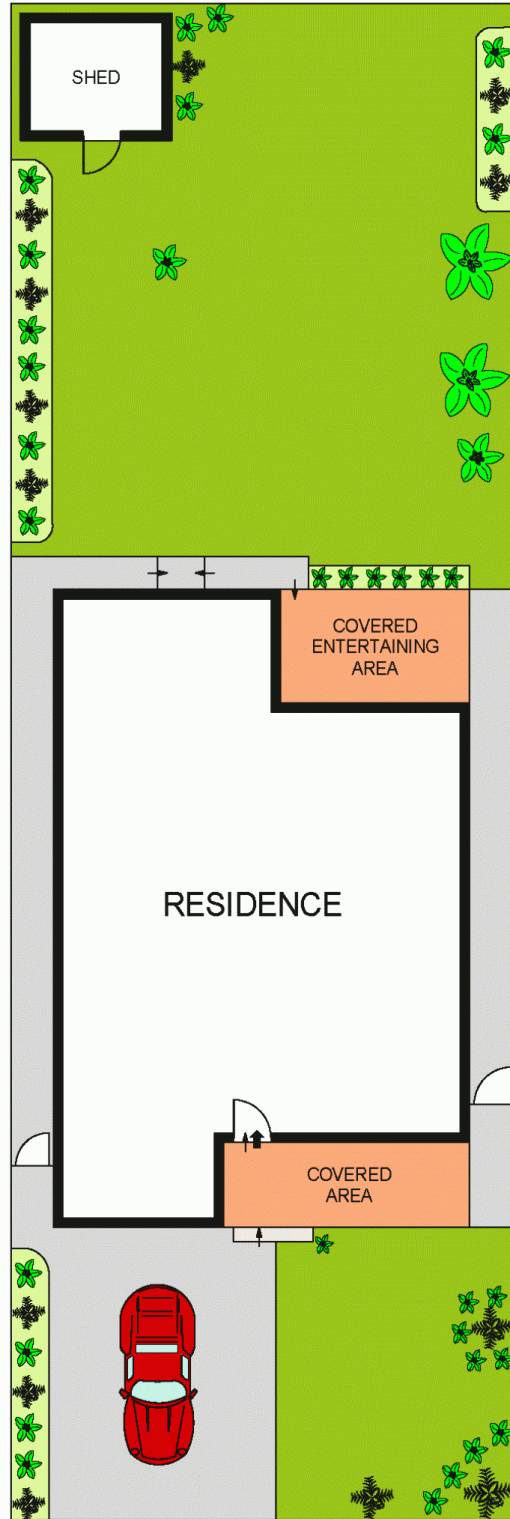
Nick Papas
02 9314 2100



LEVEL ONE



GROUND LEVEL



SITE PLAN
(NOT TO SCALE)



SCALE (METRES)

ALL INFORMATION CONTAINED HEREIN IS GATHERED FROM SOURCES WE DEEM TO BE RELIABLE. HOWEVER WE CANNOT GUARANTEE ITS ACCURACY AND INTERESTED PARTIES SHOULD RELY ON THEIR OWN ENQUIRIES.
REF. NO: 68058



31 METCALFE STREET

MAROUBRA