



26 Monash Gardens PAGEWOOD NSW

3 2 2

Architecturally enhanced to showcase a prime selection of finishes, this impeccable home excels in luxurious living that combines space, style and quality across a light filled layout. Situated in Pagewood's most prestige pocket, surrounded by parklands, golfing greens and placed minutes away to Westfield Eastgardens.

Type : House
Price : \$ 2,150,000
Land Size : 373 sqm
View : <https://www.agentsandco.com.au/sale/nsw/eastern-suburbs/pagewood/residential/house/6767605>

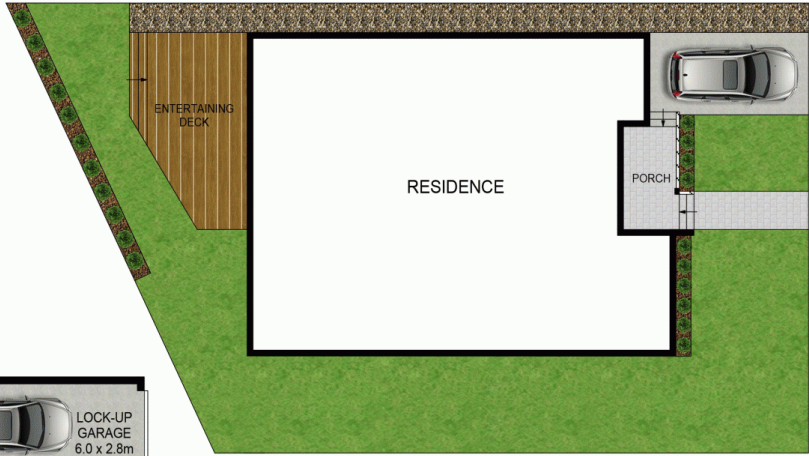
Features:

- Entertainers' kitchen with Bosch appliances, marble benchtops
- Living and dining boasting high ceilings opening to a large deck
- 3 large bedrooms all with built-in robes 4th bedroom nursery/office

[For full version visit the website](https://www.agentsandco.com.au)



Nick Papas
02 9314 2100

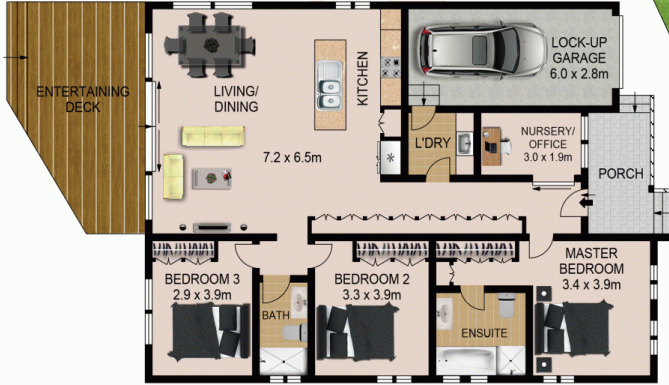


RESIDENCE

PORCH

ENTERTAINING DECK

SITE PLAN
(NOT TO SCALE)



ENTERTAINING DECK

LIVING/
DINING

7.2 x 6.5m

KITCHEN

LOCK-UP
GARAGE
6.0 x 2.8m

L'DRY

NURSERY/
OFFICE
3.0 x 1.9m

PORCH

BEDROOM 3
2.9 x 3.9m

BATH

BEDROOM 2
3.3 x 3.9m

ENSUITE

MASTER
BEDROOM
3.4 x 3.9m



SCALE (METRES)

All information contained herein is gathered from sources we deem to be reliable.
However we cannot guarantee its accuracy and interested parties should rely on their own enquiries.
Ref. No: 77519



26 MONASH GARDENS

PAGEWOOD