



4/35 Brittain Crescent HILLSDALE NSW

2 1 1

About The Home;

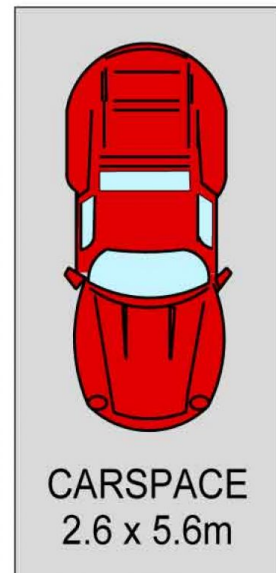
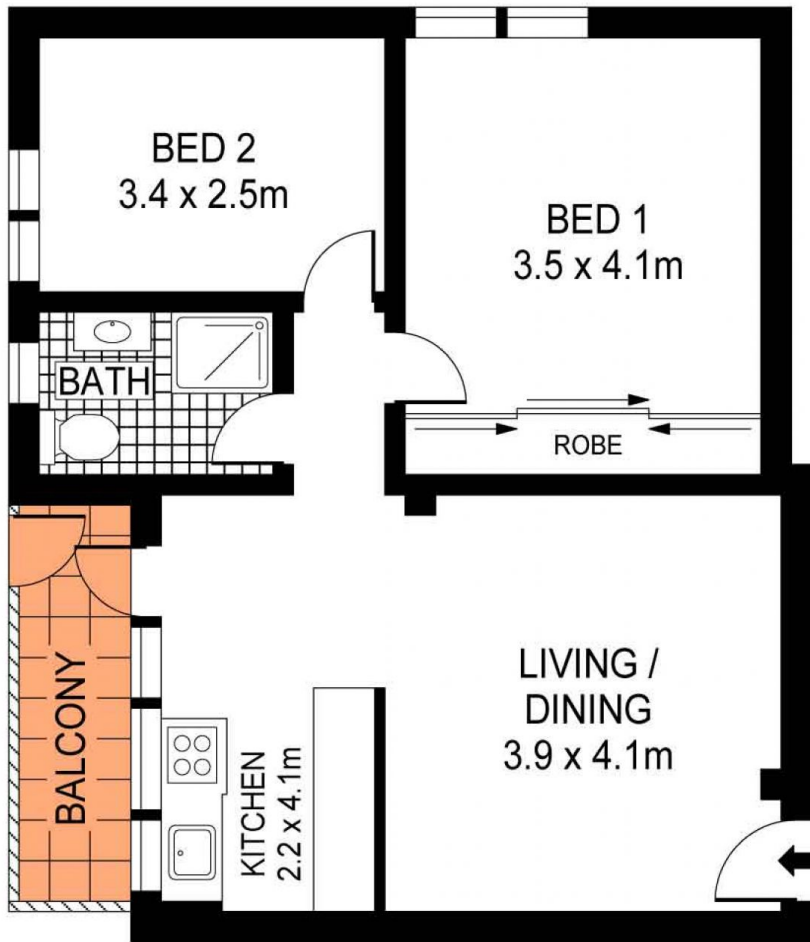
- Space and privacy makes this easy living at its finest
- Spacious, open and comfortable living area, floating floors
- Gas kitchen, new cooktop & generous counter space
- Large, light-filled bedrooms w/built-ins, car space for one
- Modern bathroom with potential to add further value
- Convenient dual entry from balcony, communal laundry,
- Ideal entry point to the market for first homebuyer/couple
- Minutes to a choice of schools, city buses, eastern beaches

Land Size : 72 sqm

View : <https://www.agentsandco.com.au/sale/nsw/eastern-suburbs/hillsdale/residential/apartment/6767642>

The Lifestyle;

This ground floor two bedroom apartment resides in a highly convenient community setting. Just 10 minute walk to Westfield Eastgardens, Southpoint Shopping Centre and City and Bondi Junction buses, it's a short stroll to the



GROUND FLOOR



ALL INFORMATION CONTAINED HEREIN IS GATHERED FROM SOURCES WE DEEM TO BE RELIABLE.
HOWEVER WE CANNOT GUARANTEE ITS ACCURACY AND INTERESTED PARTIES SHOULD RELY ON THEIR OWN ENQUIRIES.
REF. NO: 55679



4/35 BRITAIN CRESCENT

HILLSDALE