






16 Murray Road PAGEWOOD NSW

3  2  2 

About The Home;

- Three generous bedrooms, all with built-ins, main with ensuite
- Separate study nook room with built-in desk
- Large entertaining area with timber decking
- Beautiful North facing backyard
- Huge useable attic space
- Kitchen fit with marble breakfast bar, luxury stainless steel appliances
- Ducted Air conditioning throughout
- Nestled within a leafy cul-de-sac only moments away from Jellicoe Park

Type : House

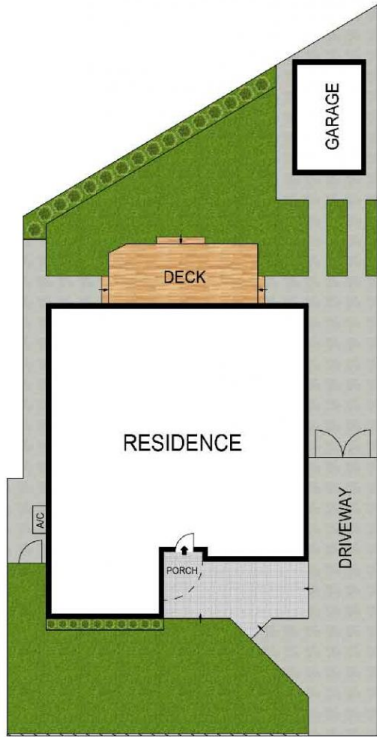
Land Size : 405 sqm

View : <https://www.agentsandco.com.au/sale/nsw/eastern-suburbs/pagewood/residential/house/6767663>



Nick Papas
02 9314 2100

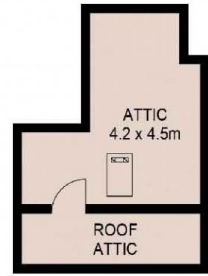
[For full version visit the website](https://www.agentsandco.com.au)



SITE PLAN
(NOT TO SCALE)



PLANS SHOWN ONLY INDICATIVE OF LAYOUT. DIMENSIONS ARE APPROXIMATE.
Ref. No: 84620



ATTIC



16 MURRAY ROAD

PAGEWOOD