



5 Evans Avenue EASTLAKES NSW

3 1 2

Being offered for the first time in over 60 years is this beautiful original bungalow that is perfect for re-development or to renovate and much more.

About The Home;

- R4 zoning, high density
- Land size: 466sqm
- Land Dimensions: 15.24m x 30.48m
- FSR: 1:1
- Height of building 14m
- Potential Duplex Site (STCA)
- Potential boarding house for 20 rooms (STCA)
- Potential unit site for 5 x 2 bedroom units (STCA)

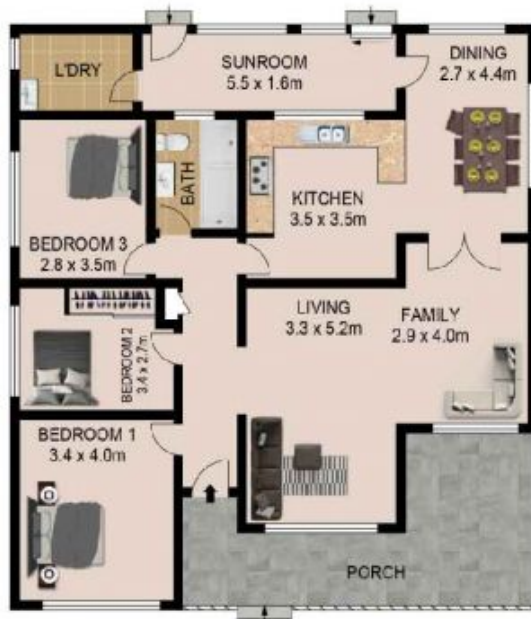
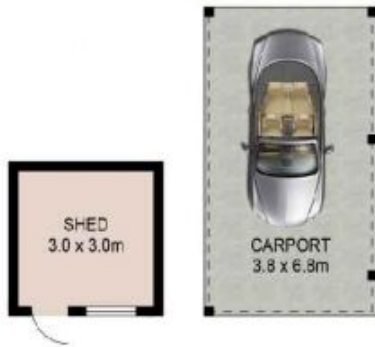
Type : House

View : <https://www.agentsandco.com.au/sale/nsw/easter-n-suburbs/eastlakes/residential/house/6767668>



Nick Papas
02 9314 2100

[For full version visit the website](#)



SITE PLAN
(NOT TO SCALE)

0 1 2 3 4 5
SCALE (METRES)

PLANS SHOWN ONLY INDICATIVE OF LAYOUT. DIMENSIONS ARE APPROXIMATE.
Ref No: 15613

5 EVANS AVENUE

EASTLAKES