



27 Boonah Avenue EASTGARDENS NSW

2 1 2

About The Home;

- * Two bedrooms with built-in wardrobes in main
- * Level block of land
- * Original kitchen & bathroom
- * Great floor plan to work with to re-design
- * Internal laundry, original details throughout
- * Off street parking with side access to rear yard
- * Land size 309m2 approx
- * Frist time being offered in 40 years
- * Within walking distance to parks, schools, & Westfield Eastgardens

The Lifestyle;

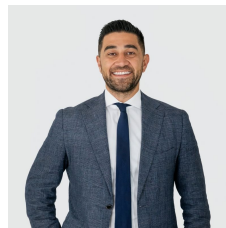
Located only minutes to Westfield Eastgardens, Heffron

[For full version visit the website](https://www.agentsandco.com.au)

Type : Semi Detached

Land Size : 309 sqm

View : <https://www.agentsandco.com.au/sale/nsw/eastern-suburbs/eastgardens/residential/semi-detached/6767674>



Nick Papas
02 9314 2100



SITE PLAN
(NOT TO SCALE)



GROUND LEVEL



All information contained herein is gathered from sources we deem to be reliable. However we cannot guarantee its accuracy and interested parties should rely on their own enquiries. Ref. No: B5369.



27 BOONAH AVENUE

EASTGARDENS