



13 Edgehill Avenue BOTANY NSW

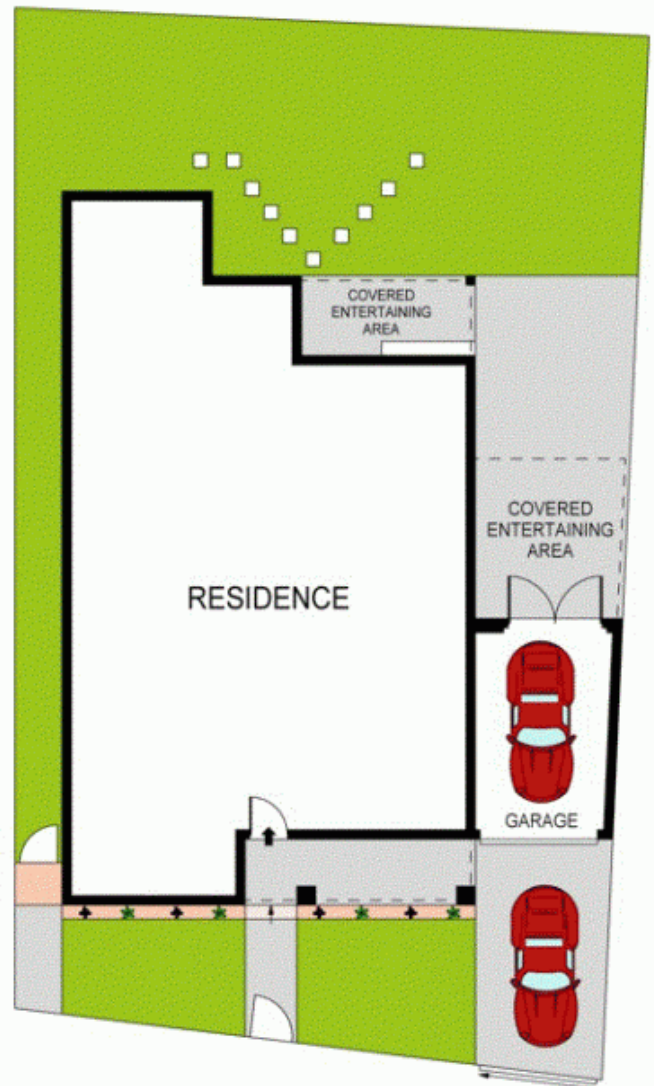
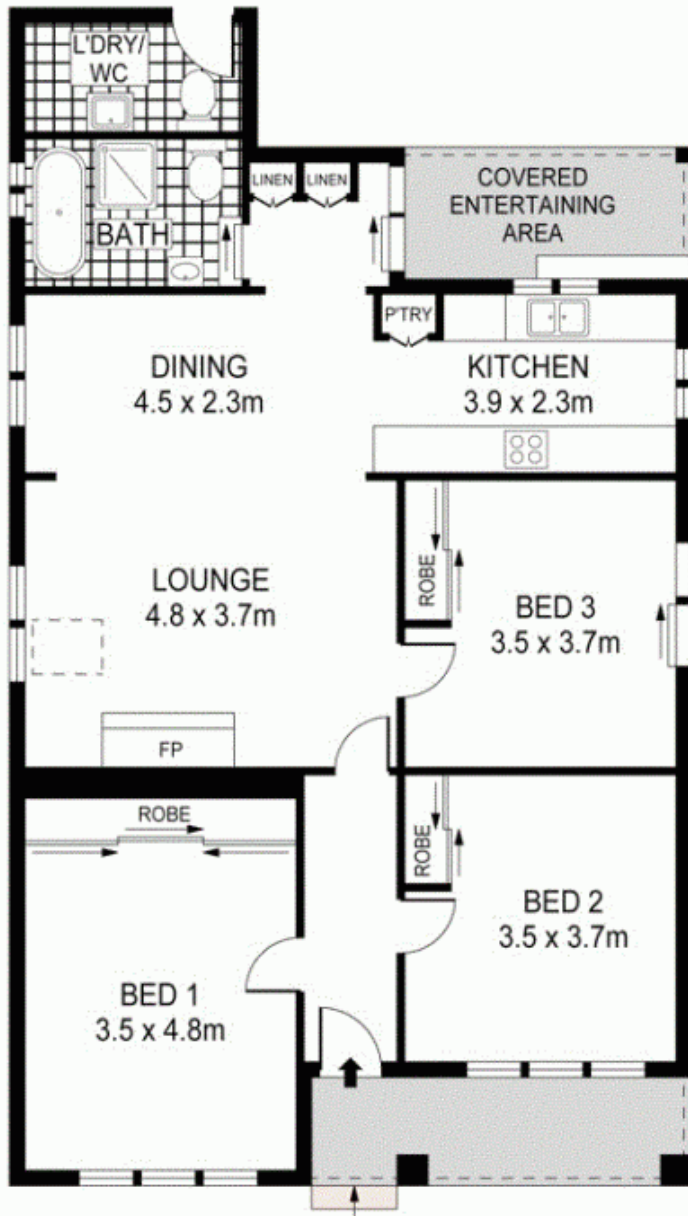
3  1  1 

About The Home:

- Stylishly renovated, beautifully contemporary family home
- Open plan living and dining space featuring elegant fireplace
- Ultra-deluxe gas kitchen with Bosch appliances and sleek lines
- Three generous bedrooms, all with floor to ceiling built ins
- Luxurious bathroom with high end finishes & freestanding bath
- Good sized external laundry with second w/c, possible storage
- Sun drenched grass yard, ideal for relaxed family entertaining
- Security alarm, ducted air con throughout, plantation shutters
- Single lock up garage with rear access, plus driveway car

Land Size : 253 sqm

View : <https://www.agentsandco.com.au/sale/nsw/eastern-suburbs/botany/residential/house/6767698>



SITE PLAN
(NOT TO SCALE)



SCALE (METRES)

PLANS SHOWN ONLY INDICATIVE OF LAYOUT. DIMENSIONS ARE APPROXIMATE.
Ref. No. 46170

