



12/82 Bay Street BOTANY NSW

2 2 2

About The Home;

- * Open plan living with sliding doors to balcony
- * Contemporary open plan gas kitchen with Caesarstone benchtops and breakfast bar
- * Two bedrooms with built-in wardrobes, master with ensuite and sunroom access
- * Study with ample storage, internal laundry, large entertaining balcony
- * Secure parking for two cars, additional storage cage
- * Security intercom and lift access
- * Large shared BBQ area with seating in the community garden
- * Close to Booralee Park, Botany Pool, cafes and transport

The Lifestyle;

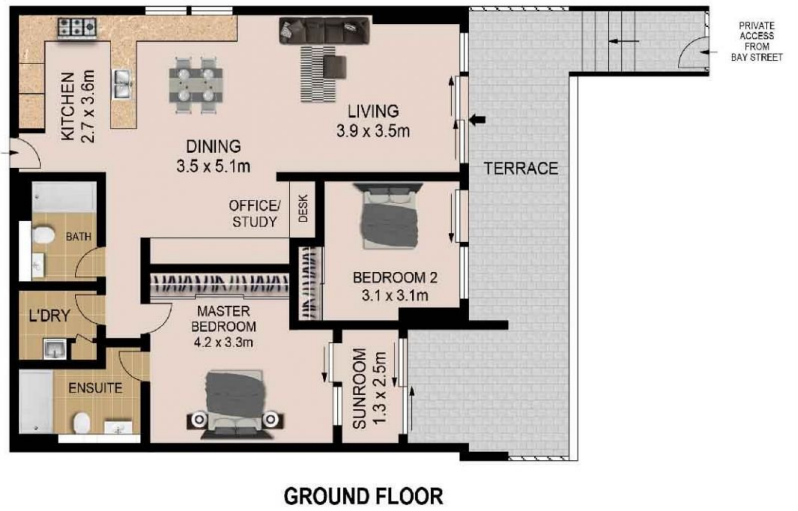
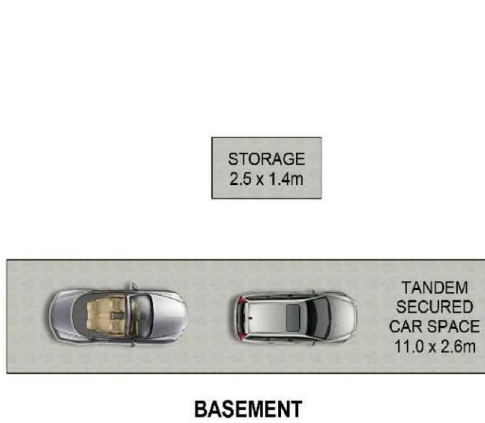
Located on the first floor with its own private street

Building Size : 17 sqm

View : <https://www.agentsandco.com.au/sale/nsw/eastern-suburbs/botany/residential/apartment/6767699>



Natalie Vega
02 9314 2100



All information contained herein is gathered from sources we deem to be reliable. However we cannot guarantee its accuracy and interested parties should rely on their own enquiries.
Ref. No: 87408



12/82 BAY STREET

BOTANY