

205C/42 Pemberton Street BOTANY NSW

3  2  2 

About The Home:

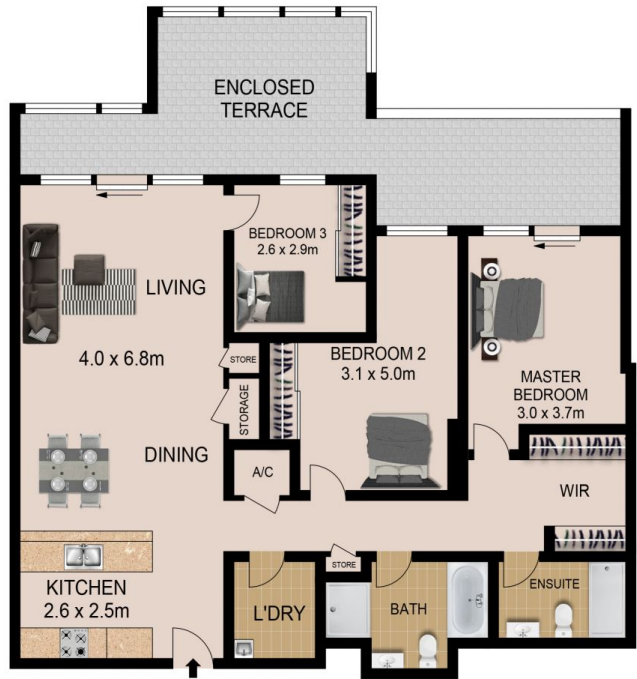
- Generous layout delivers great functionality, light and flow
- Comfortable integrated living/dining zone, enclosed terrace
- Superb retreat to take in the fresh or and entertain friends
- Large gas kitchen includes stainless appliances, dishwasher
- Large bedrooms has convenient built-in robe and balcony access
- Ultra spacious bathroom with shower and floor-to-ceiling tiles
- Air conditioning, timber flooring, intercom and neutral tones
- Secure pet-friendly building with basement parking and storage
- Great opportunity for savvy investors or first homebuyers

Building Size : 16 sqm

View : <https://www.agentsandco.com.au/sale/nsw/eastern-suburbs/botany/residential/apartment/6767701>



BASEMENT



LEVEL TWO



All information contained herein is gathered from sources we deem to be reliable.
However we cannot guarantee its accuracy and interested parties should rely on their own enquiries.
Ref. No: 87372



205/42 PEMBERTON STREET

BOTANY