



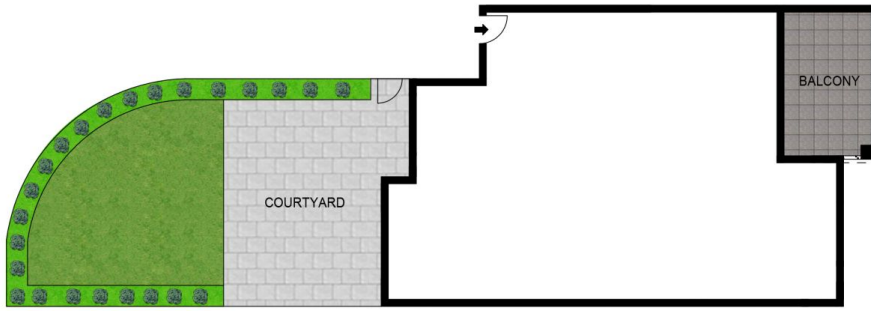
24/1 Wride Street MAROUBRA NSW

2 2 1

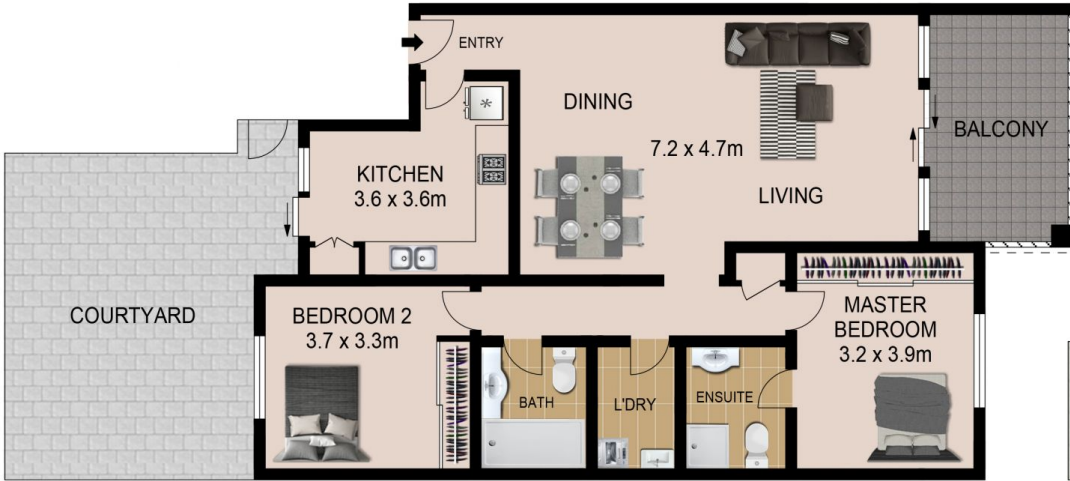
Exclusively positioned within the impeccably maintained 'Bay Gardens' complex, this private garden apartment enjoys a sun soaked east facing layout with spacious interiors and modern updates throughout. It's located just 600 metres from Maroubra Beach.

- Expansive open living area flows to adjoining dining space
- Sunny full width entertaining courtyard with easy care gardens
- Modern gas kitchen w/stainless steel appliances & storage
- Master bedroom features wall-to-wall built-ins plus ensuite
- Second bedroom with built-ins, timber flooring , ceiling fans
- Fully tiled main bathroom with bathtub, internal laundry

Building Size : 19 sqm
View : <https://www.agentsandco.com.au/sale/nsw/eastern-suburbs/maroubra/residential/apartment/6767732>



SITE PLAN
(NOT TO SCALE)



All information contained herein is gathered from sources we deem to be reliable. However we cannot guarantee its accuracy and interested parties should rely on their own enquiries. Ref. No. 89637



24/1 WRIDE STREET

MAROUBRA