



1002/98-102 Maroubra Road MAROUBRA NSW

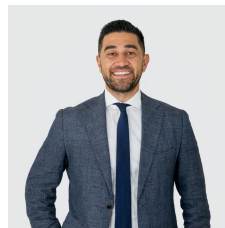
3 2 2

Located in the heart of Maroubra Junction in the 'Belair' building, this penthouse apartment is all about the views! Every room offers uninterrupted district views, with the highlight being the glorious sun-drenched terrace with its full 180 degree urban, city skyline views & Port Botany views. Not only is this a wonderful opportunity to embrace a truly low maintenance lifestyle, there is also room for you to add your own touch and contemporary flair should you wish.

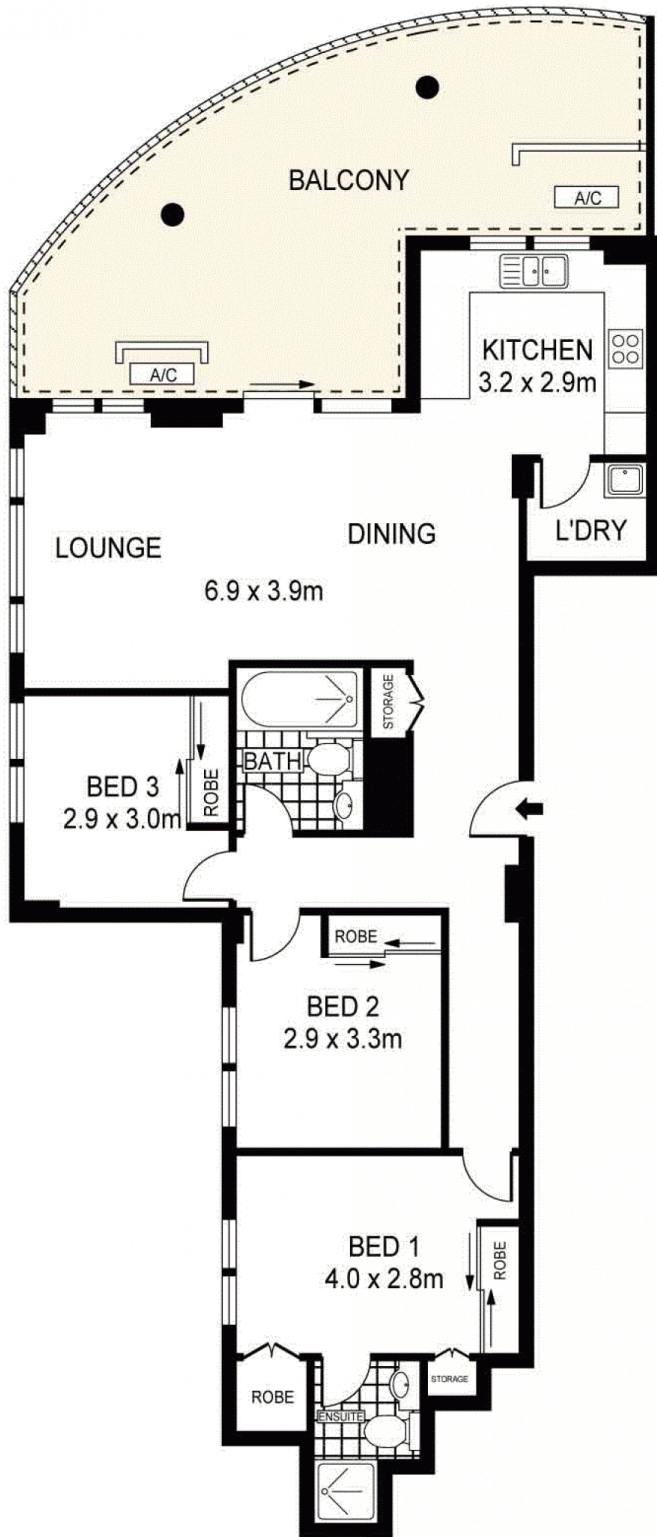
- Top floor penthouse with far reaching views from every room
- Combined living and dining, opening to sun-drenched terrace

[For full version visit the website](https://www.agentsandco.com.au/sale/nsw/eastern-suburbs/maroubra/residential/apartment/6767802)

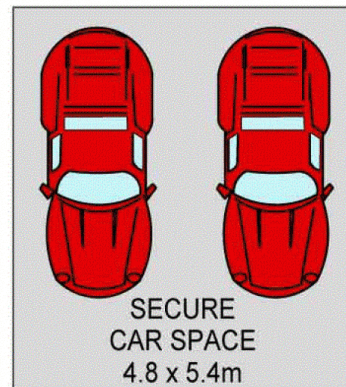
**Type** : Apartment  
**Building Size** : 15 sqm  
**View** : <https://www.agentsandco.com.au/sale/nsw/eastern-suburbs/maroubra/residential/apartment/6767802>



**Nick Papas**  
02 9314 2100



**LEVEL TEN**



PLANS SHOWN ONLY INDICATIVE OF LAYOUT. DIMENSIONS ARE APPROXIMATE.  
Ref. No. 41396



1002/98-102 MAROUBRA ROAD

MAROUBRA