



2 Daunt Avenue Matraville NSW

5 🛏 2 🚗 2 🚗

Nestled within a deep block occupying 675sqm of North facing land, moments walk to the main hub of Matraville. This character filled home offers huge opportunity to renovate into the perfect entertainer or further scope the redevelopment of the site (STCA). Within a few moments you have the benefit of Peninsula shopping centre and boutique shops (with the Matraville Masterplan Report currently on exhibition), Heffron park currently undergoing a \$30m upgrade, Des Renford Aquatic centre, children's playgrounds, South Sydney Rabbitohs training facilities, Maroubra, Malabar and Little Bay beaches/coastal walks and city transport along Bunnerong Road.

* 675sqm North facing level block of land

[For full version visit the website](https://www.agentsandco.com.au)

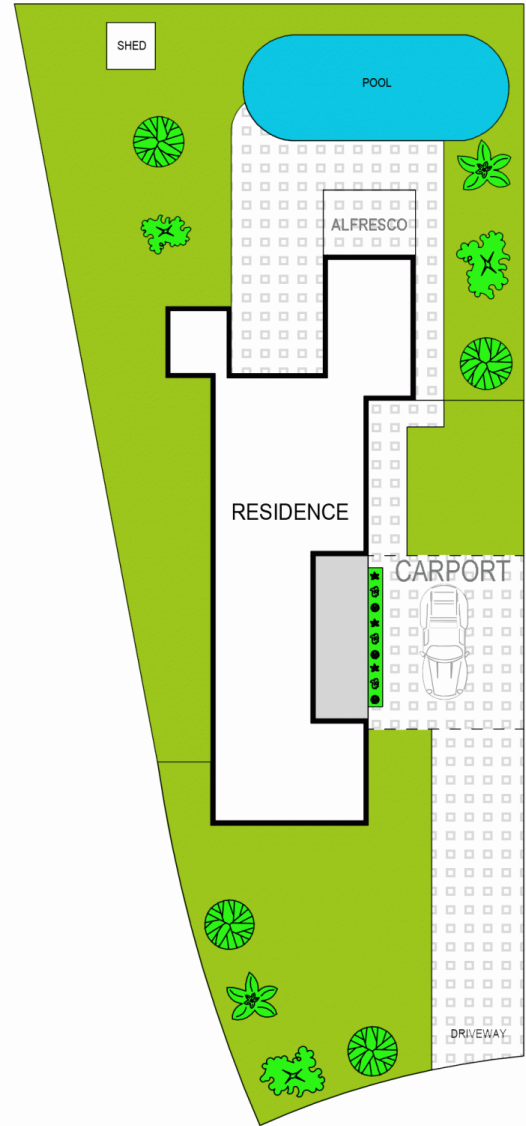
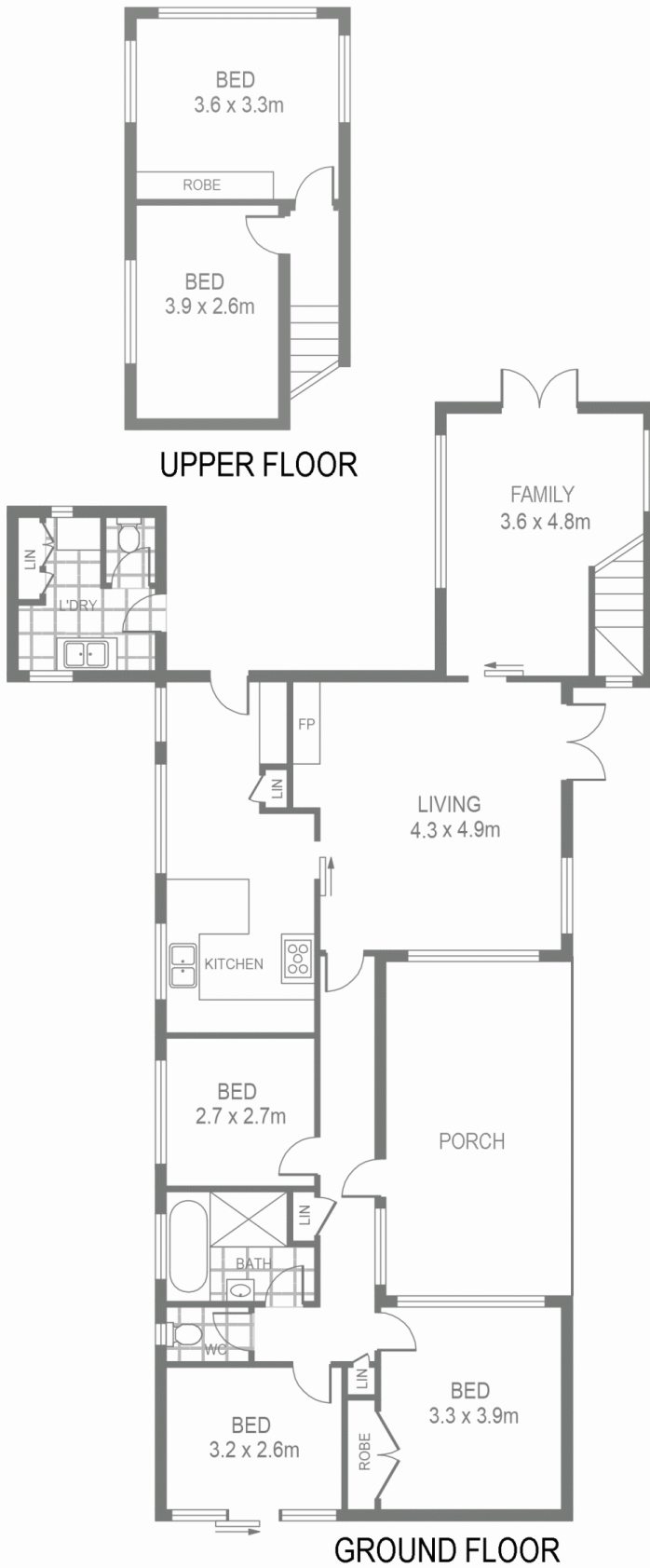
Type : House
Price : \$ 2,300,000
Land Size : 675 sqm
View : <https://www.agentsandco.com.au/sale/nsw/eastern-suburbs/matraville/residential/house/6819810>



Clay Chigwidden
02 9314 2100



Nick Papas
02 9314 2100



2 DAUNT AVENUE

MATRAVILLE

Scale in metres.

Indicative only. All information contained herein is obtained from sources we believe to be accurate. We cannot guarantee its accuracy. Interested persons should make and on their own enquiries.