



## 9/4 Podmore Place Hillsdale NSW

1 1 1

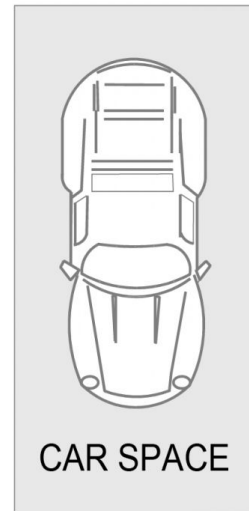
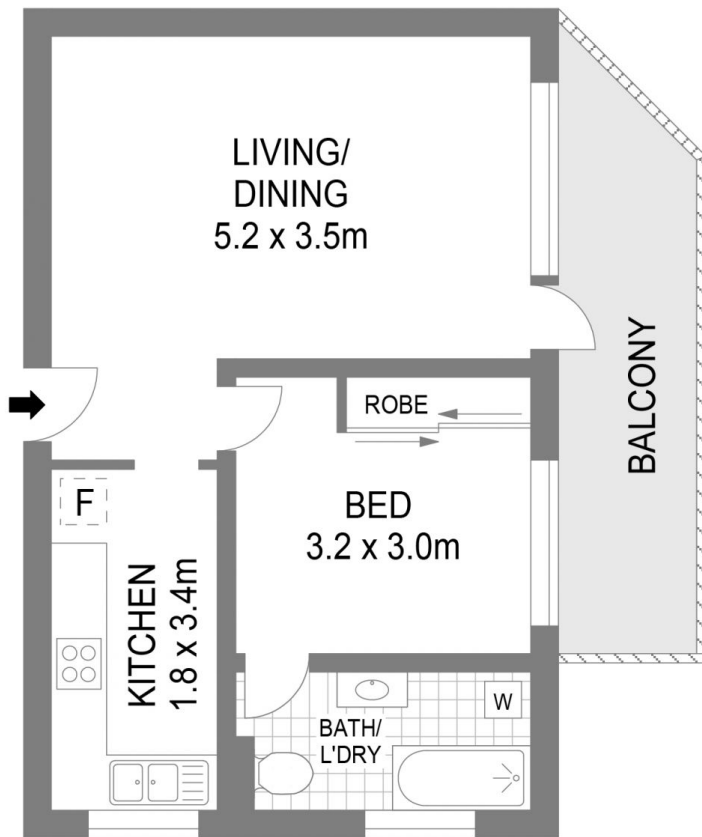
Set within a boutique block of only 9 apartments, this top floor fully renovated North facing apartment boasts a bright and airy feel throughout. The apartment enjoys a private outlook with beautiful district views and being conveniently located within moments to shopping centres, public transport, Heffron Park sporting facilities at your doorstep. Enjoy the low stress lifestyle with easy access into Sydney's CBD, airport, Westfield Eastgardens, beaches, golf courses and national parks nearby.

- \* Generous sized open plan living/dining areas
- \* Direct North East facing aspect
- \* Good sized bedroom with built-in-robos
- \* Renovated gas kitchen
- \* Updated bathroom complete with bathtub
- \* Huge entertainers balcony

**View** : <https://www.agentsandco.com.au/sale/nsw/eastern-suburbs/hillsdale/residential/apartment/7046547>



**Clay Chigwidden**  
02 9314 2100



CAR SPACE NOT ON TITLE,  
EXCLUSIVE USE

## TOP FLOOR

9/4 Podmore Place

Hillsdale

Scale in metres.  
Indicative only. All information contained herein is obtained from sources we believe to be accurate.  
We cannot guarantee its accuracy. Interested persons should make and on their own enquiries.