



13/47-49 Australia Street Camperdown NSW

1 🏠 1 🚗

Set on a leafy street in a boutique block of 16 is this sun-lit, top floor studio apartment overlooking Camperdown Park. This self contained modern studio would make an ideal first home or reliable investment. Just a short stroll to shops, cafes, local parks and public transport and Newtown.

Price : \$ 520,000

View : <https://www.agentsandco.com.au/sale/nsw/inner-west/camperdown/residential/studio/7216868>

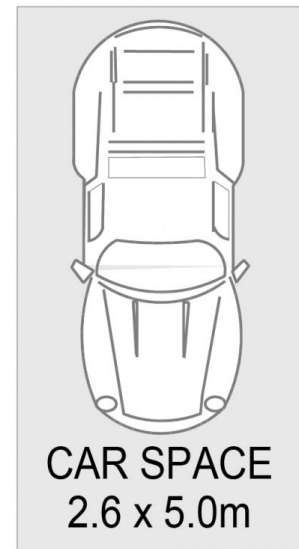
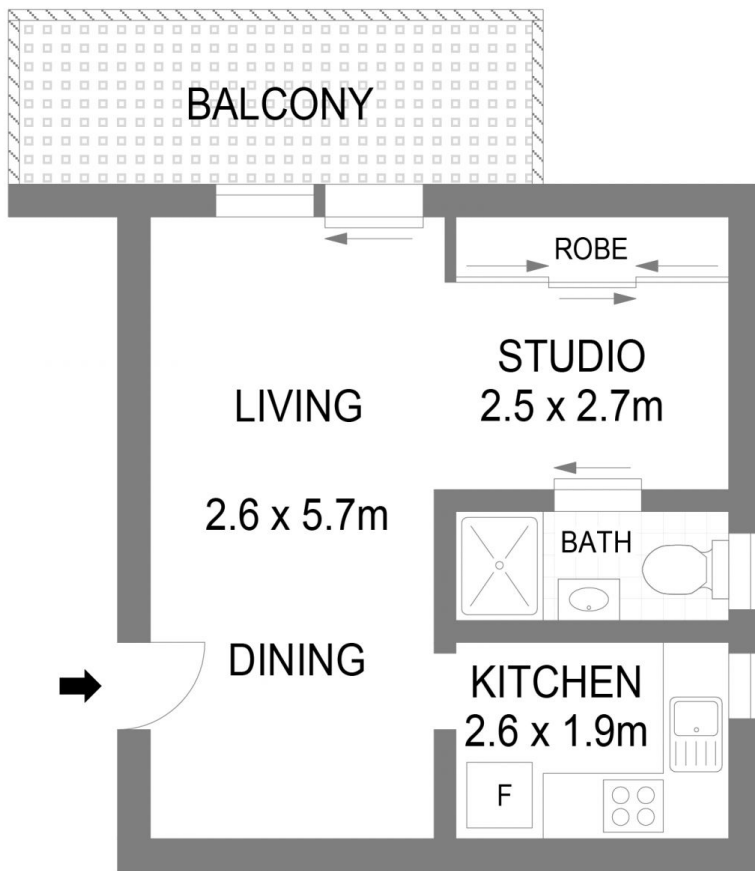
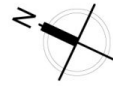
- + Separate bedroom nook with built-in robe
- + Modern kitchen with stainless steel appliances
- + Bright North East facing balcony overlooking Camperdown Park
- + In close proximity to RPA hospital, the University of Sydney, beautiful parks, cafes and transport



Darrin Agius
0400 687 387



Nick Papas
02 9314 2100



13/47-49 Australia Street

Camperdown

Scale in metres.
Indicative only. all information contained herein is obtained from sources we believe to be accurate.
We cannot guarantee it's accuracy. Interested persons should make their own enquiries.