



## 224 Wentworth Avenue Eastgardens NSW

3 1 4

Discover a private, renovated, hidden gem set behind lush greenery positioned in an ultra-convenient setting opposite Westfield with Heffron Park just around the corner. Low maintenance, modern and graced with airy spaces, it opens to wonderful alfresco entertaining space, lock up garage with side access and offers scope for a second storey (STCA). Conveniently located opposite the retail and dining hub of Westfield Eastgardens, it's surrounded by a host of recreational and sporting attractions as well as in a close proximity to Maroubra and Malabar Beaches.

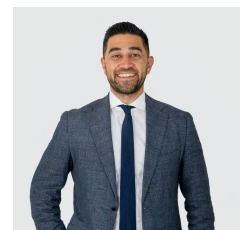
- + Full double brick family home
- + Live in now or potential to add value (STCA)
- + Generous sized 380 sqm parcel of land

[For full version visit the website](https://www.agentsandco.com.au)

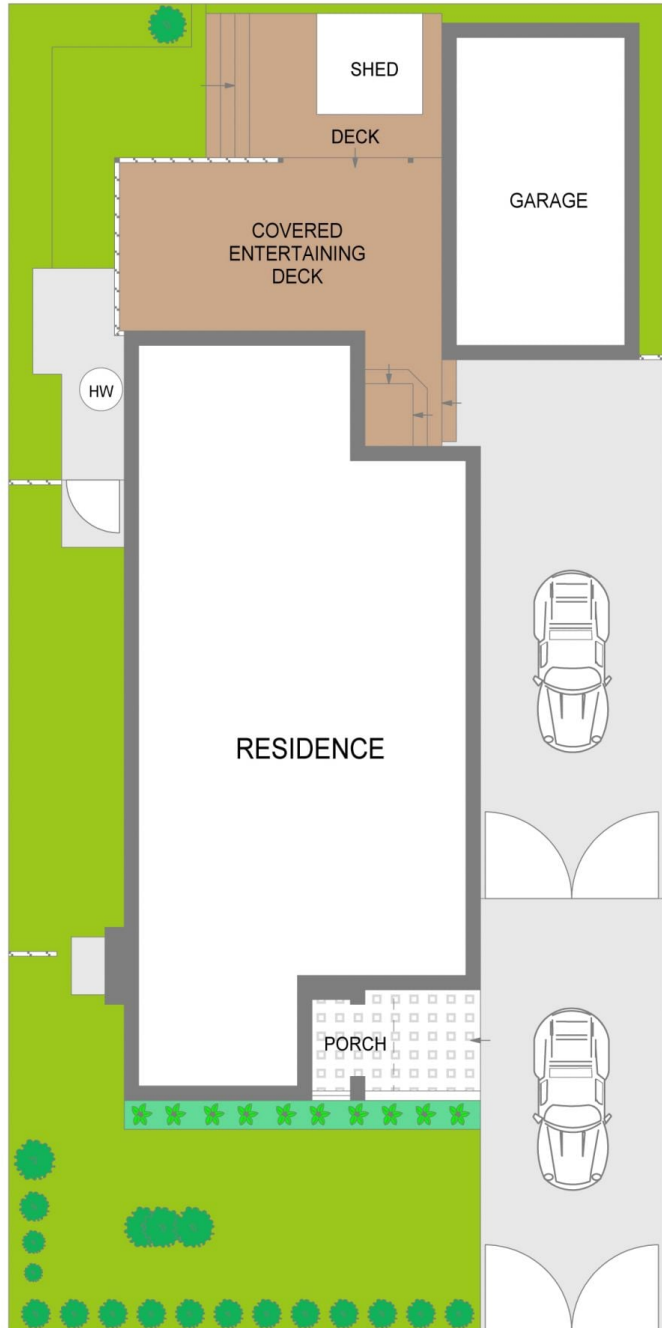
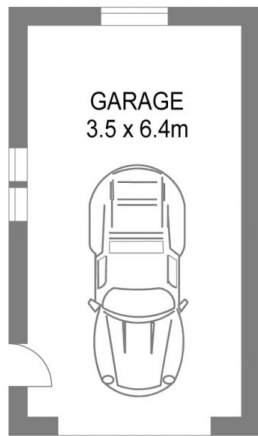
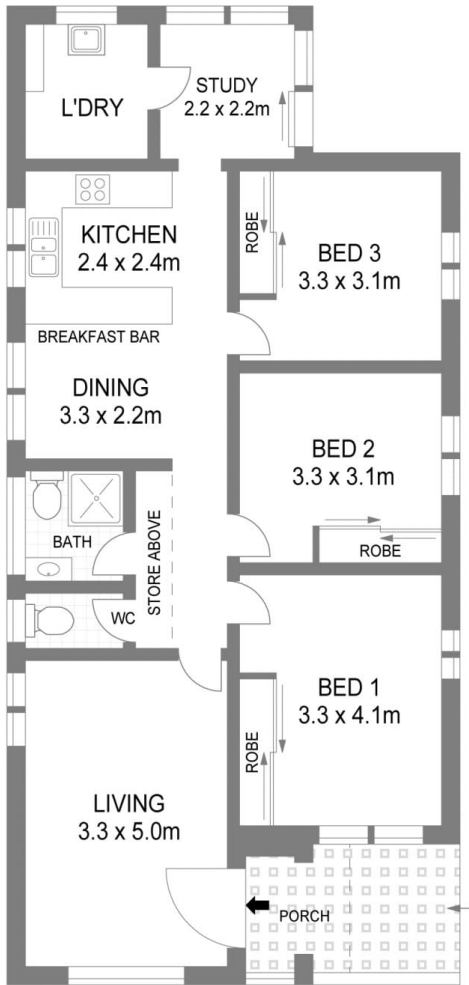
**Type** : House  
**Price** : \$ 1,601,000  
**Land Size** : 380 sqm  
**View** : <https://www.agentsandco.com.au/sale/nsw/eastern-suburbs/eastgardens/residential/house/7284046>



**Clay Chigwidden**  
02 9314 2100



**Nick Papas**  
02 9314 2100



SITE PLAN

224 Wentworth Avenue

Eastgardens

Scale in metres.  
Indicative only. All information contained herein is obtained from sources we believe to be accurate.  
We cannot guarantee its accuracy. Interested persons should make and on their own enquiries.