



## 2 Howell Avenue Matraville NSW

4 2 2

Set within one of Matraville's premier locations, this commanding corner positioned, double brick family home and has been cleverly designed for the active family offering the ultimate convenience of a relaxed, easy care lifestyle. Open plan, wide living areas complimented with soaring high ceilings open up onto an entertainers courtyard with BBQ terrace and additional all weather alfresco areas.

Within moments you have access to Matraville shopping peninsula, boutique shops and cafés, wide open spaces, bike tracks, kids playgrounds and Des Renford aquatic centre at Heffron Park, Malabar, Maroubra and Little Bay coastal walks and beaches, Pioneer Park, Barwon Park and express city transport along Anzac Parade and Bunnerong Road.

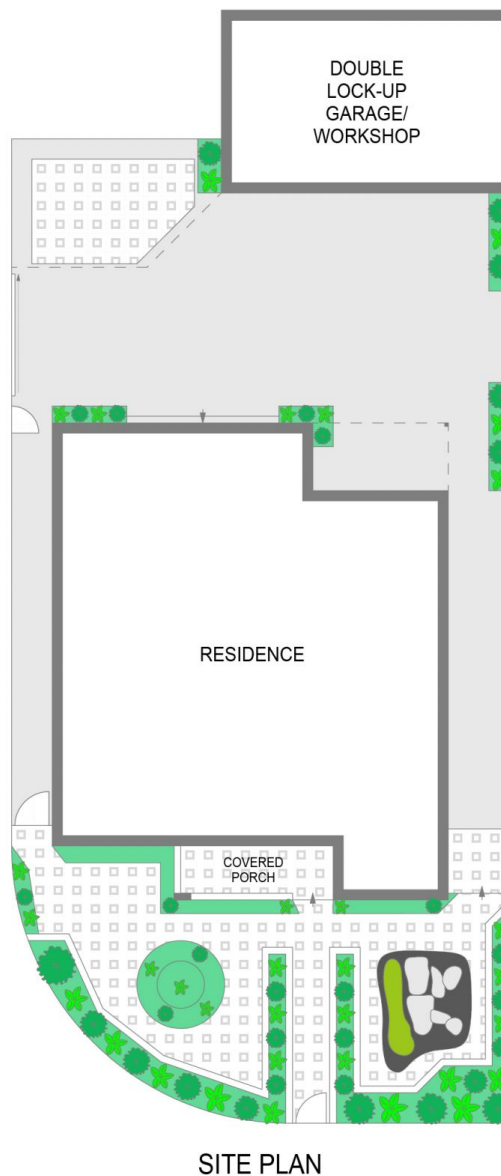
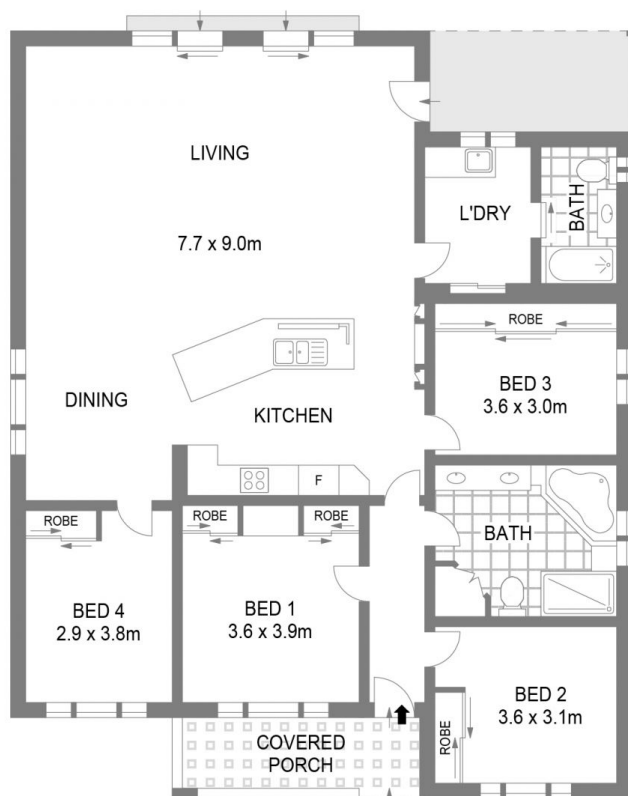
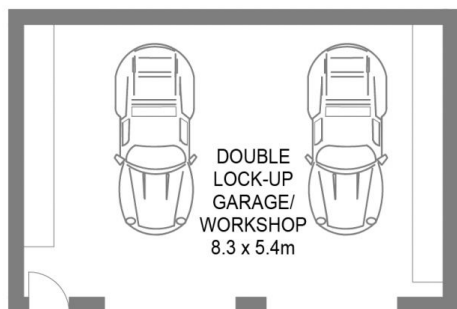
**Price** : \$ 2,400,000  
**Land Size** : 481 sqm  
**View** : <https://www.agentsandco.com.au/sale/nsw/eastern-suburbs/matraville/residential/house/7303611>



**Clay Chigwidden**  
02 9314 2100



**Darrin Agius**  
0400 687 387



2 Howell Avenue

Matraville

Scale in metres.  
Indicative only. all information contained herein is obtained from sources we believe to be accurate.  
We cannot guarantee it's accuracy. Interested persons should make their own enquiries.