



31/108 Boyce Road Maroubra NSW

2 2 1

Positioned in the heart of Maroubra Junction, this spacious two bedroom apartment is perfect for the first home buyer or investor alike. Open planned living and dining with an oversized north facing balcony overlooking common area terrace and pool.

Subregional shopping district at Pacific Square, strip mall with an array of restaurants and service businesses, Princes of Wales hospital, world-renowned Randwick Children's Hospital and the University of NSW. Public transport at your doorstep for easy access to City.

+ Open planned living and dining areas, a/c in living area, opening to an oversized east facing balcony

[For full version visit the website](https://www.agentsandco.com.au)

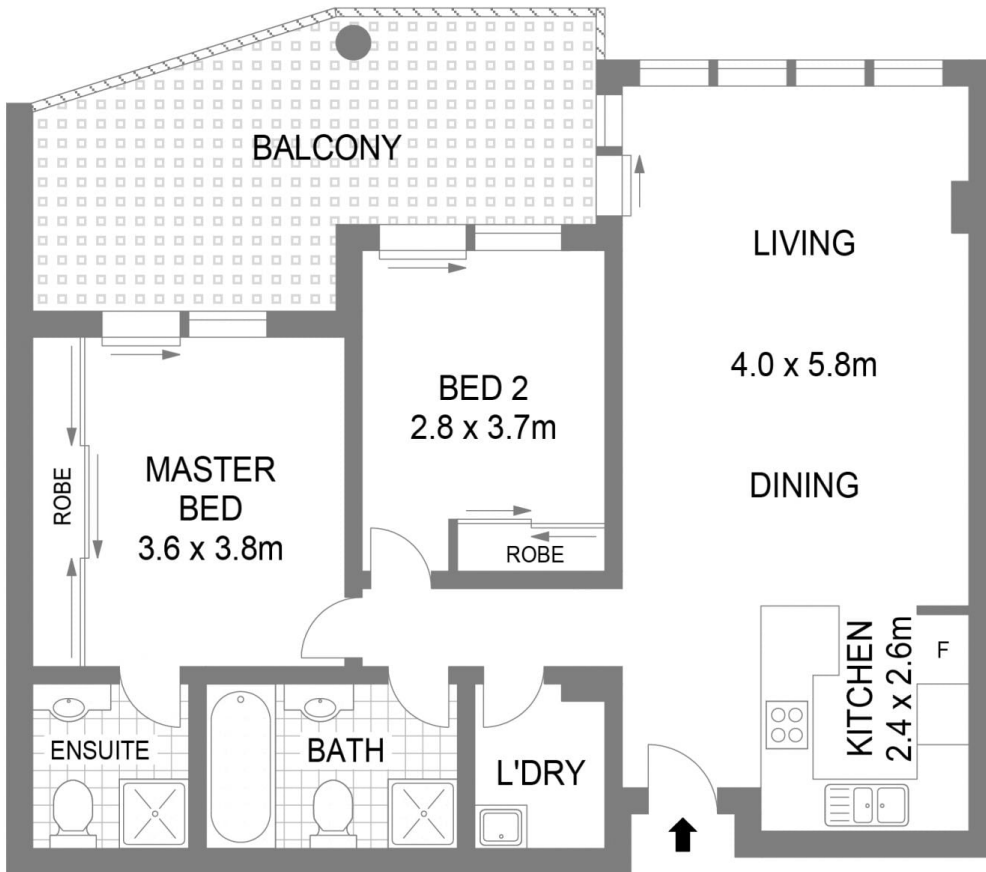
**Type** : Apartment  
**Land Size** : 111 sqm  
**View** : <https://www.agentsandco.com.au/sale/nsw/eastern-suburbs/maroubra/residential/apartment/7449140>



**Maddison Christie**  
02 9314 2100



**Nick Papas**  
02 9314 2100



31/108 Boyce Road

Maroubra

Scale in metres.  
Indicative only. all information contained herein is obtained from sources we believe to be accurate.  
We cannot guarantee it's accuracy. Interested persons should make their own enquiries.