

14/15-19 Edgehill Avenue Botany NSW

2 🛏 2 🚿 2 🚗

Design meets sophisticated living in this superb inner-city townhouse style apartment with street front access. This stunning home offers a versatile floor plan and exceptional finishes. It is a total lifestyle package surrounded by gardens, parklands, easy steps to bus services, cafes village shops, Westfield Eastgardens and nearby recreational areas include Sir Joseph Banks Park, Booralee Park, Botany Aquatic Centre and a selection of Golf Courses.

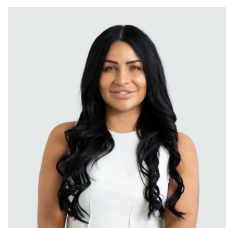
- * Immaculately presented interiors set over two levels
- * Open plan kitchen, living & dining flows to North East facing garden
- * Stone gas kitchen offers quality appliances and breakfast

[For full version visit the website](https://www.agentsandco.com.au/sale/nsw/eastern-suburbs/botany/residential/apartment/7524681)

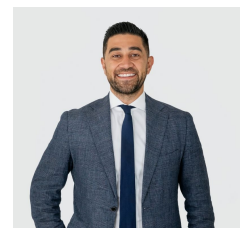
Type : Apartment

Price : \$ 1,100,000

View : <https://www.agentsandco.com.au/sale/nsw/eastern-suburbs/botany/residential/apartment/7524681>



Natalie Vega
02 9314 2100



Nick Papas
02 9314 2100



GROUND FLOOR



FIRST FLOOR



UNIT B 14
2.5 BEDROOM 2 CAR SPACE

Internal: 102.0m² External: 17.0m² Garage: 32.0m² Total: 151.0m²



Disclaimer : Colours, textures, furnitures, appliances, shrubs, shadow casts etc contained within the floor plan are for illustrative purposes only. All dimensions are approx - GFA. Floor areas quoted are approx. and subject to final survey . These floor plans do not form part of the contract for sale. No liability will be excepted.