



## 616 Bunnerong Road Matraville NSW

3 1 3

Situated in a quiet and convenient pocket along Bunnerong Road, this double brick family residence offers an opportunity to create a forever loving family home on a large, 491sqm perfectly square, block of land. Retaining many of it's hard to find character features, the home offers a perfect choice for young families, renovators or builders with an exciting opportunity to recreate, rebuild and capitalise. Having endless possibility within the home, the real drawcard here is the lifestyle on offer being within easy reach, Matraville shopping peninsula, boutique shops and cafés, wide open spaces, bike tracks, kids playgrounds and Des Renford aquatic centre at Heffron Park, Malabar, La Perouse and Little Bay coastal walks and beaches, Purcell Park, Barwon Park and express city transport along Bunnerong Road.

**Price** : \$ 1,789,000

**Land Size** : 491 sqm

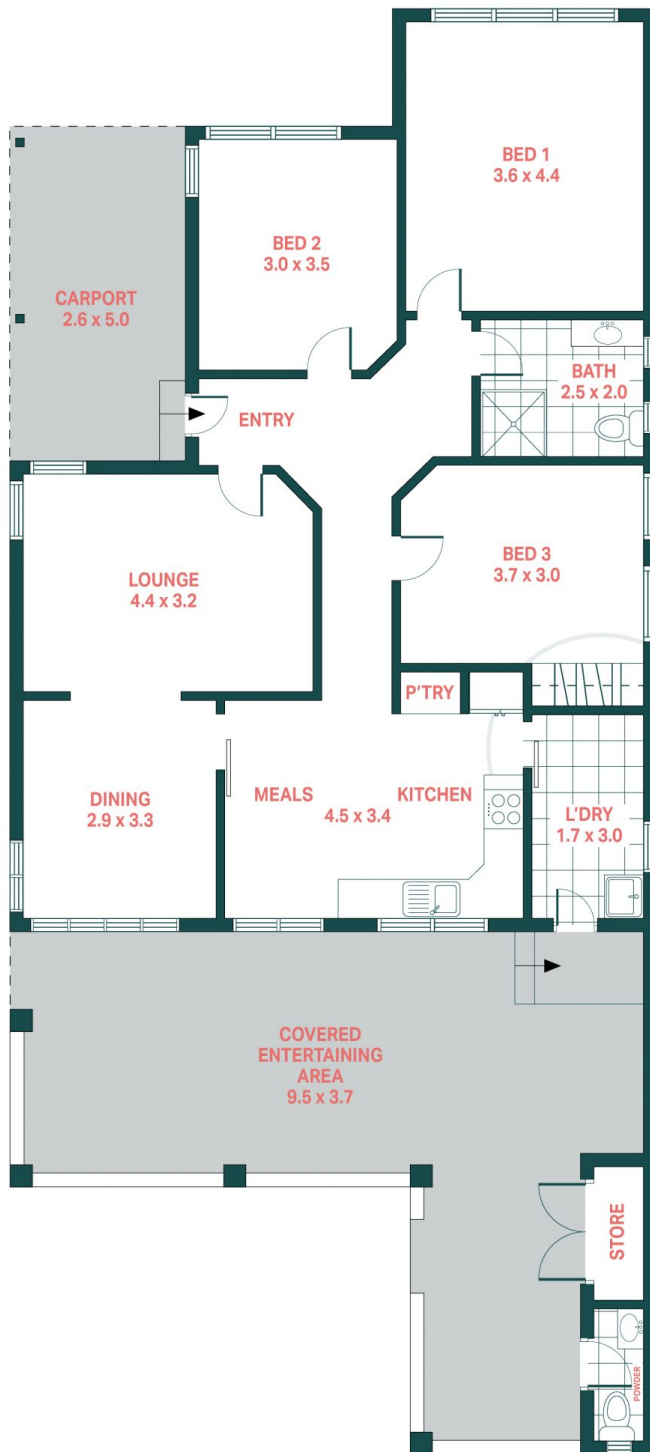
**View** : <https://www.agentsandco.com.au/sale/nsw/eastern-suburbs/matraville/residential/house/7589353>



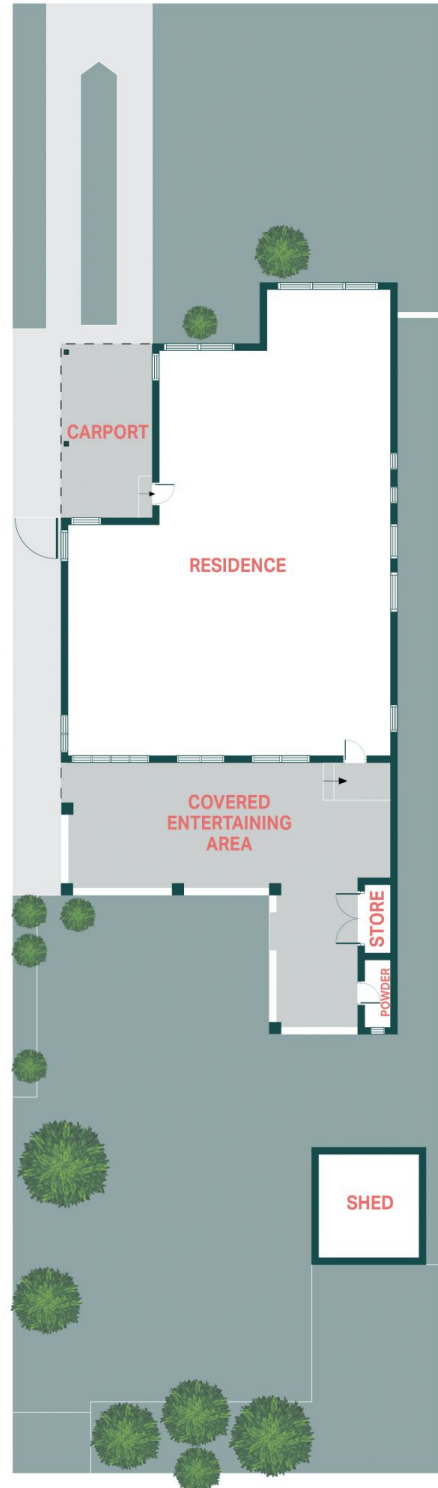
**Clay Chigwidden**  
02 9314 2100



**Darrin Agius**  
0400 687 387



**GROUND FLOOR**



**SITE PLAN**

## 616 Bunnerong Road, Matraville

**Agents<sup>+CO</sup>**

Scale in metres.  
Indicative only. All information contained herein is obtained from sources we believe to be accurate.  
We cannot guarantee it's accuracy. Interested persons should make and on their own enquires.

Internal Floor Area: 105sqm (Approx)