



7 Lasseter Avenue Chifley NSW

5 3 8

Perched up high, capturing wide district views towards Botany Bay sits this stunning, double brick, Torrens Title residence showcasing what happens when opulence meets contemporary design in a premier locale. Be captivated by soaring high 3m ceilings and streamline interiors wrapped in glass. Glass light skywalk seamlessly connects the various levels of this architectural masterpiece. Indulge in the ultimate family entertainer where the open plan living and dining zones flow effortlessly onto an undercover alfresco area complete with outdoor kitchen, wine fridge and feature Weathertex wood panelling as part of the James Hardie Collection.

Cleverly designed for low maintenance living with space in mind, extra wide hallways and blackbutt timber staircase lead to the accommodation level where all four, double

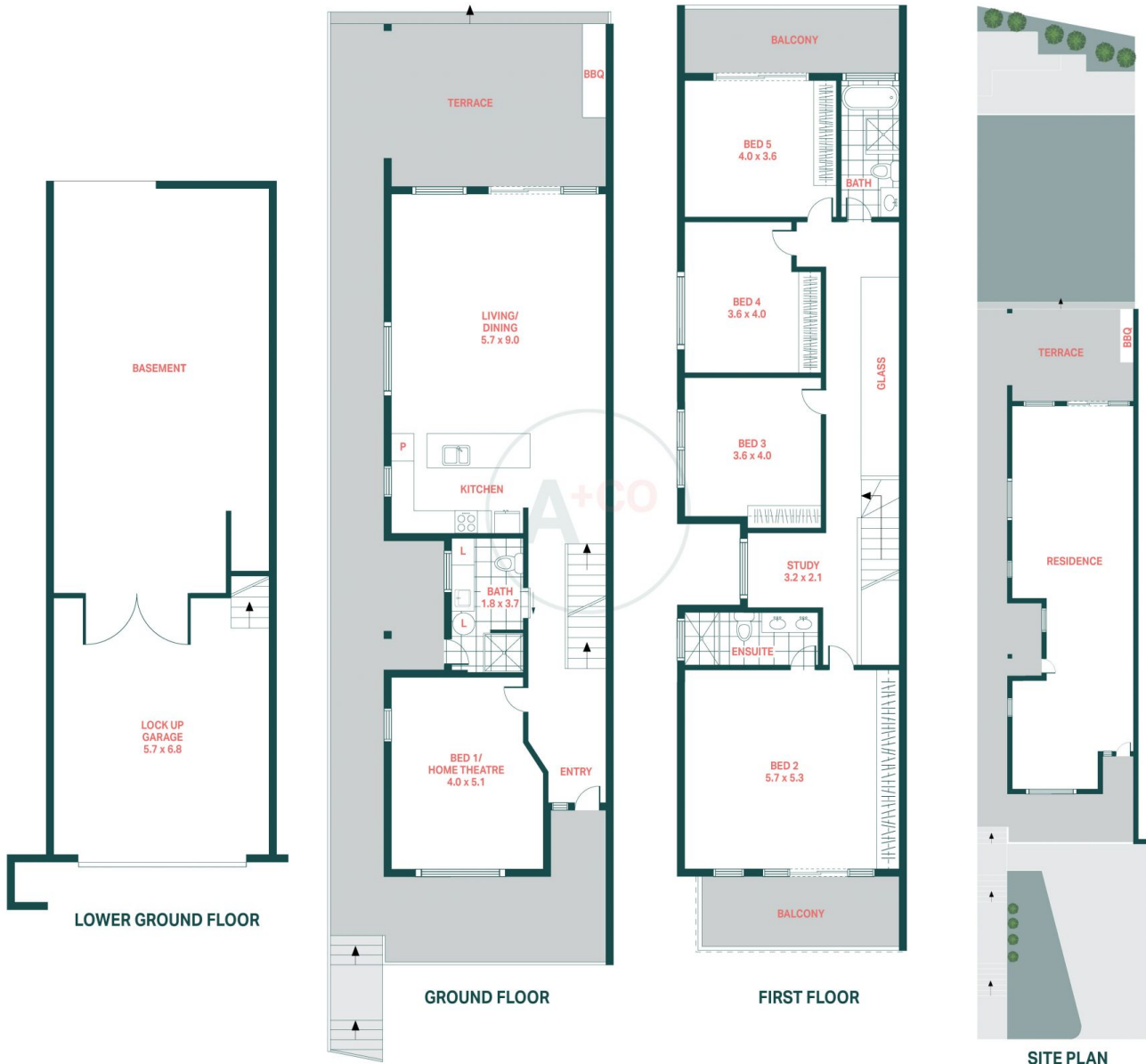
Land Size : 362 sqm
View : <https://www.agentsandco.com.au/sale/nsw/eastern-suburbs/chifley/residential/house/7639865>



Clay Chigwidden
02 9314 2100



Nick Papas
02 9314 2100



7 Lasseter Avenue, Chifley