



## 16 Frost Street Earlwood NSW

4 2 4

Perched in an elevated position on the high side of the street, this solid brick family residence boasts a luminous and adaptable layout. Ideal for a growing family, it enjoys a tranquil setting conveniently close to schools, parks, shopping, and transportation. Commuting is a breeze, just 650m from Bexley North railway station. Handy location with easy access to Earlwood shops, local eateries and the M5 motorway.

- + Extended floorplan offering great space and versatility
- + Four generous sized bedrooms, polished timber flooring
- + Well-presented timber kitchen with ample storage
- + Full sized main bathroom, internal laundry with second shower and toilet
- + Two separate lock-up garages, side driveway access to the rear

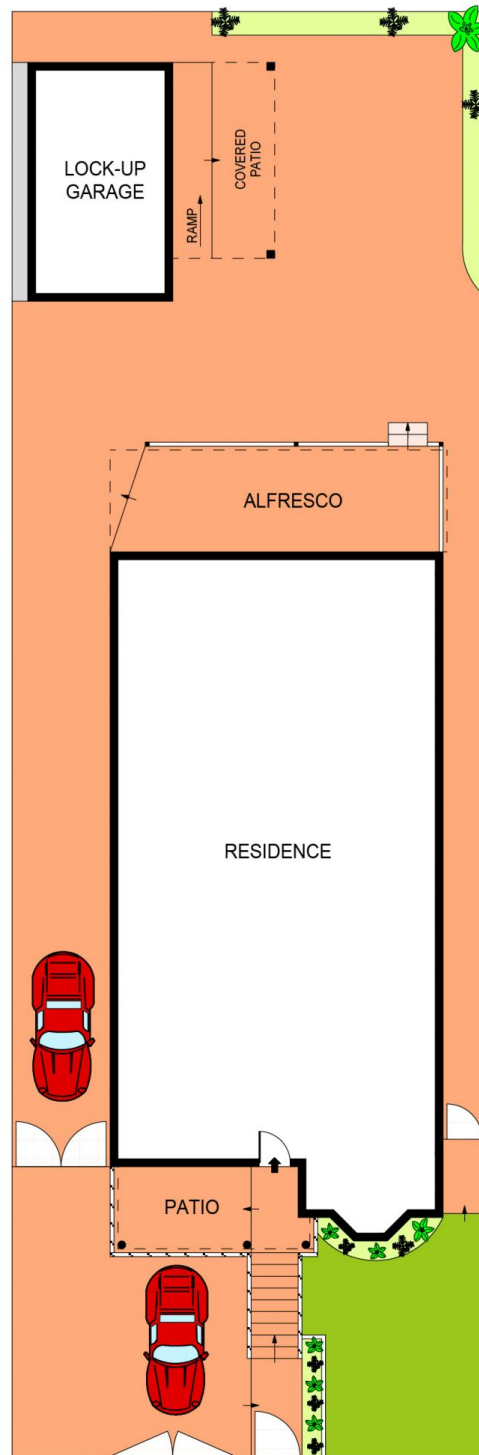
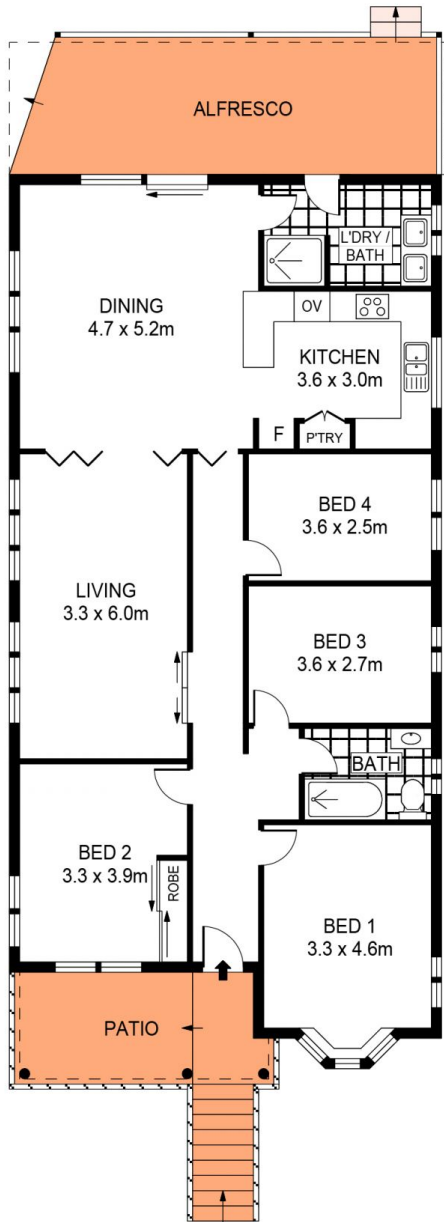
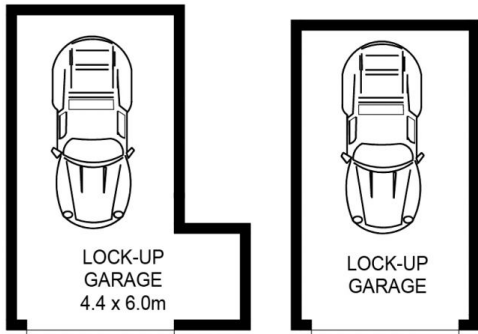
**View** : <https://www.agentsandco.com.au/sale/nsw/inner-west/earlwood/residential/house/7741705>



**Nick Papas**  
02 9314 2100



**Natalie Vega**  
02 9314 2100



**SITE PLAN**  
(NOT TO SCALE)



PLANS SHOWN ONLY INDICATIVE OF LAYOUT. DIMENSIONS ARE APPROXIMATE.  
Ref. No: 105752

