



2/15-17 Anzac Parade Kensington NSW

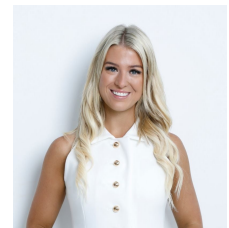
2 1 1

This newly revitalized courtyard apartment enjoys an elevated position, providing a sense of seclusion. Situated within a charming Art Deco style building comprising only eight units, this residence is discreetly set back from the street. With the convenience of the light rail right at your doorstep, this property offers seamless access to the city. It boasts an array of outdoor living spaces, and its exclusive private entrance grants it an inviting, house-like ambiance. This spacious two-bedroom apartment presents an attractive alternative to a terrace, featuring a well thought out single-level layout and the added benefit of a dedicated lock-up garage. Located just one block away from the expansive Centennial Parklands, this stylish apartment maintains its timeless appeal with its high ornate ceilings and gleaming polished floorboards. Only a 10-minute journey from the city, this residence offers effortless access

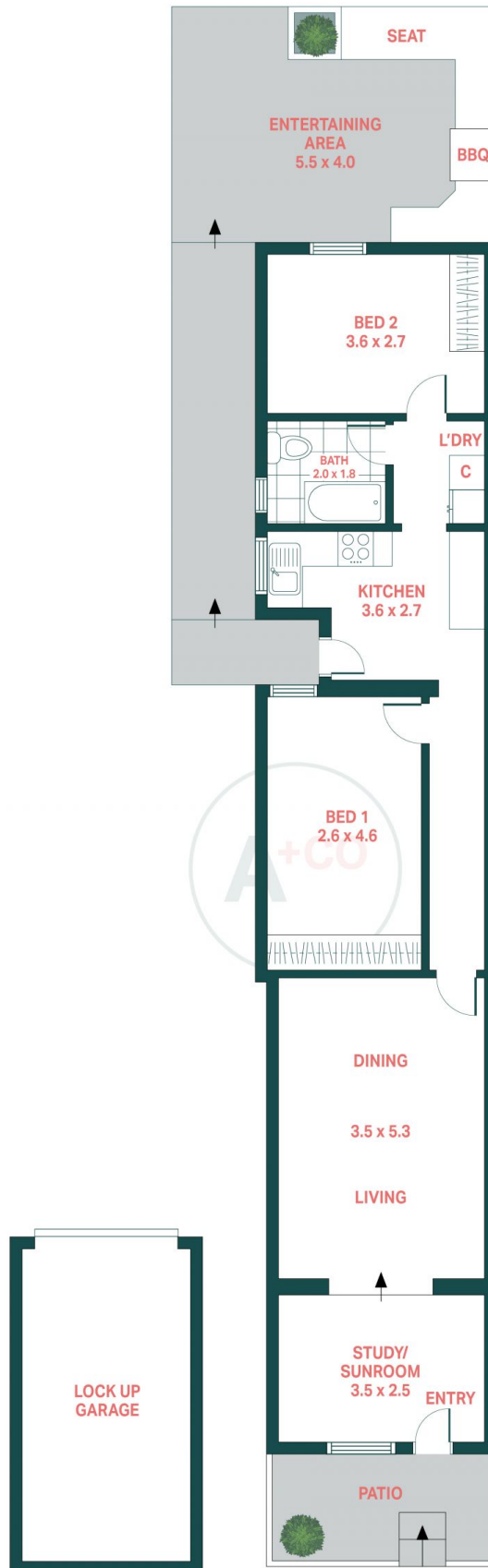
Price : \$ 1,065,000
Land Size : 87 sqm
View : <https://www.agentsandco.com.au/sale/nsw/eastern-suburbs/kensington/residential/apartment/7800056>



Nick Papas
02 9314 2100



Maddison Christie
02 9314 2100



2/15-17 Anzac Parade, Kensington

Agents^{+CO}

Scale in metres.
 Indicative only. All information contained herein is obtained from sources we believe to be accurate.
 We cannot guarantee it's accuracy. Interested persons should make and on their own enquires.

Internal Floor Area: 71sqm (Approx)
 Total Floor Area: 126sqm (Approx)