

323/97 Boyce Road Maroubra NSW

2  2  1 

The Lifestyle:

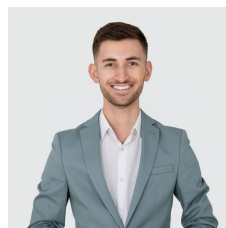
Superbly located in a heart of Maroubra Junction and just minutes walk from sparkling waters of Maroubra beach this massive apartment located within secure building of famous Pacific Square complex.

Type : Apartment

View : <https://www.agentsandco.com.au/lease/nsw/east-ern-suburbs/maroubra/residential/apartment/7808957>

Property Features Include:

- * Spacious split level, two bedroom apartment (120 square meters)
- * Located above Pacific Square Maroubra Junction
- * Coles and ALDI supermarkets with many specialty shops at your doorstep
- * Two large bedrooms on different levels, both with built-ins and stylish bathrooms



Anthony Schembri
aNT



Eleni Roumanous
02 9314 2100

[For full version visit the website](#)