



702/89-91 Boyce Road Maroubra NSW

3 2 2

Indulge in sweeping panoramic vistas that stretch across the city skyline from this mesmerizing split-level penthouse residence. Bathed in sunlight from its coveted Northerly orientation, the home boasts an elegant open-plan design. Nestled in the vibrant heart of Maroubra Junction, mere moments from Pacific Square shopping centre and convenient public transport, with the added allure of a brief drive to the pristine shores of Maroubra Beach.

- + Expansive open-plan living and dining flooded with natural light
- + Approximately 192sqm of refined living space distributed over two levels
- + Immense corner balcony offering a 270-degree panoramic spectacle
- + High-quality granite kitchen equipped with stainless steel

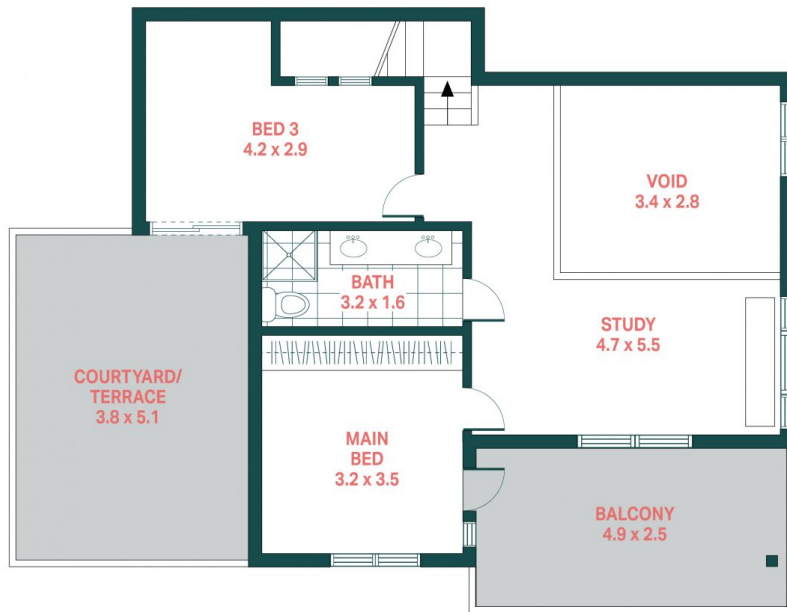
**Land Size** : 226 sqm  
**View** : <https://www.agentsandco.com.au/sale/nsw/eastern-suburbs/maroubra/residential/apartment/7851568>



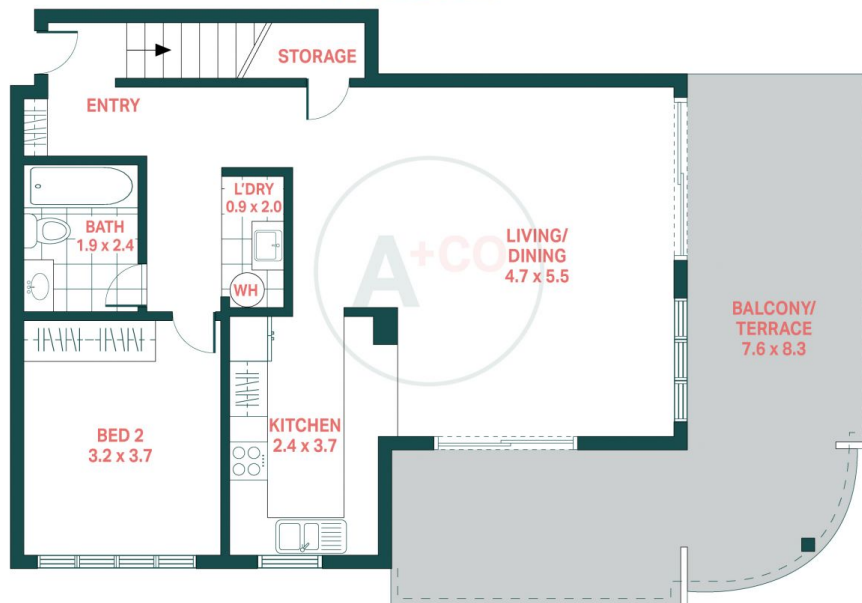
**Nick Papas**  
02 9314 2100



**Natalie Vega**  
02 9314 2100



**UPPER LEVEL**



**LOWER LEVEL**



**702/89-91 Boyce Road, Maroubra**

**Agents<sup>+</sup>CO**

Scale in metres.  
 Indicative only. All information contained herein is obtained from sources we believe to be accurate.  
 We cannot guarantee it's accuracy. Interested persons should make and on their own enquires.

Internal Floor Area: 132sqm (Approx)  
 Total Floor Area: 230sqm (Approx)