



31 Wentworth Avenue Pagewood NSW

4 1 2

Situated just 700 meters from Westfield Eastgardens and a short stroll to Mutch Park, this family residence bathed in natural light offers low-maintenance living. With a sought-after north-east to rear orientation, the property features an expansive yard with a covered outdoor entertaining space. Positioned on a generous 474 sqm parcel of land, this home presents an exciting opportunity for extension and redesign (STCA), allowing you to shape your dream living space to perfection.

- + Full double brick family home
- + Live in now or potential to add value (STCA)
- + Private gas kitchen with dishwasher
- + Four spacious bedrooms one with built-in robe
- + North-east facing yard with covered entertainers space
- + Bathroom features a separate bath and shower

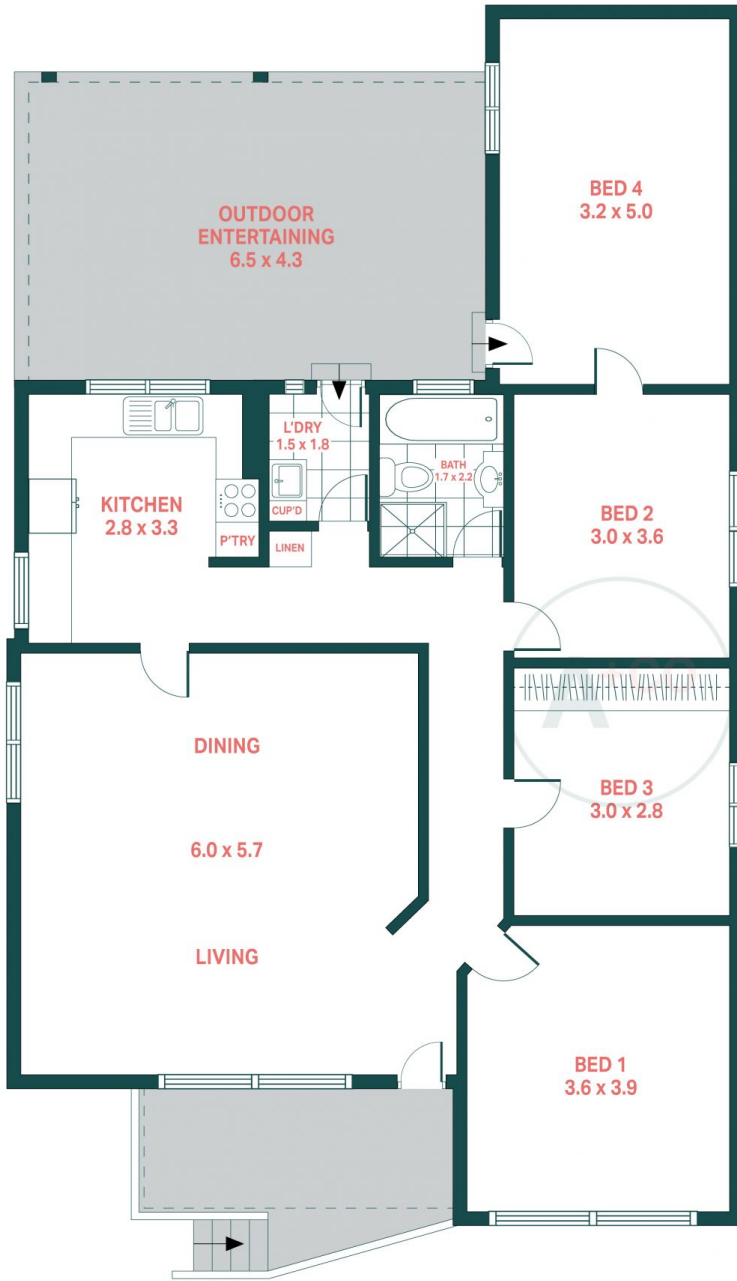
Price : \$ 1,780,000
Land Size : 474 sqm
View : <https://www.agentsandco.com.au/sale/nsw/eastern-suburbs/pagewood/residential/house/7913166>



Natalie Vega
02 9314 2100



Nick Papas
02 9314 2100



GROUND FLOOR



SITE PLAN

31 Wentworth Avenue, Pagewood

Agents^{+CO}

Scale in metres.
Indicative only. All information contained herein is obtained from sources we believe to be accurate.
We cannot guarantee it's accuracy. Interested persons should make and on their own enquires.

Land Size: 474.2 sqm Total