

## 23 Lasseter Avenue Chifley NSW

4 3 4

Capturing sweeping bay views, this brand new duplex spans three light filled levels, with multiple recreation zones for both parents and children. Boasting exquisite finishes, sculptural details and state-of-the-art construction, this magnificent property makes a luxurious sanctuary for growing families.

Tailored to the contemporary lifestyle, the home embraces beautiful northerly sunshine, cross flow breezes, floor-to-ceiling glass and wide corridors that create an uplifting ambience that continues throughout. A central lift services each level, direct from the oversized triple garage.

Nestled in a much-loved residential pocket, the home is set a stroll to Chifley Sports Reserve, playgrounds and Chifley Public School, with the sandy shores of Malabar and Little

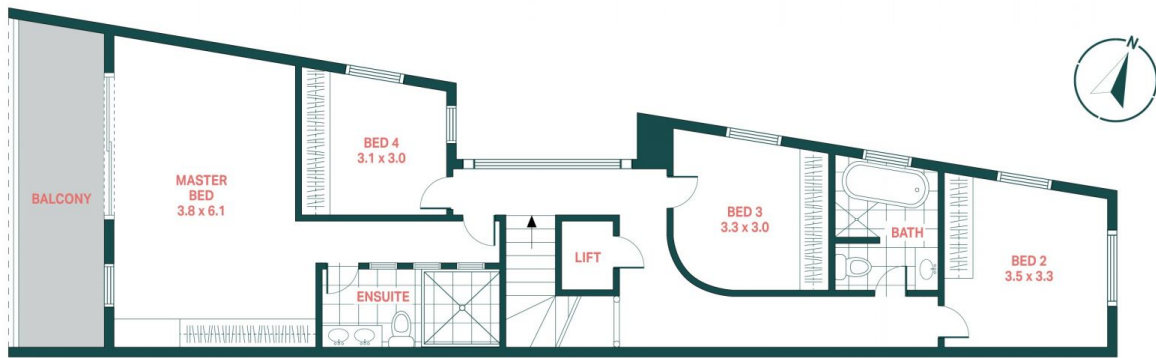
**View** : <https://www.agentsandco.com.au/sale/nsw/easter-n-suburbs/chifley/residential/house/7927820>



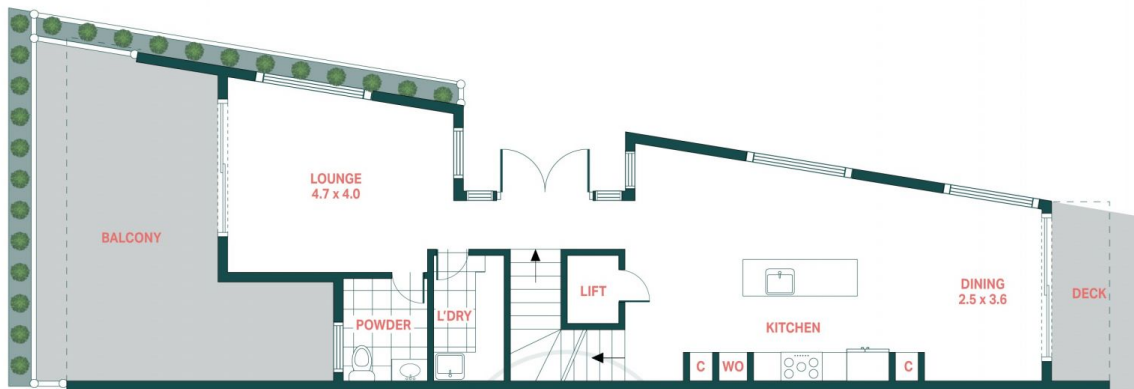
**Nick Papas**  
02 9314 2100



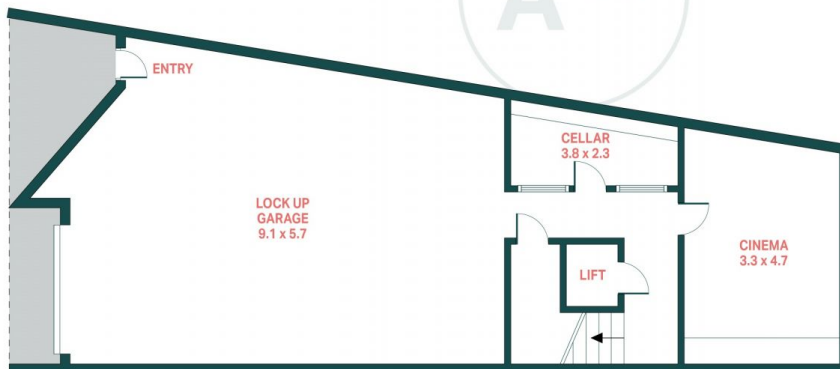
**Clay Chigwidden**  
02 9314 2100



TOP FLOOR



FIRST FLOOR



GROUND FLOOR



SITE PLAN

**23 Lasseter Avenue, Chifley**

**Agents<sup>+</sup>CO**

Scale in metres.  
Indicative only. All information contained herein is obtained from sources we believe to be accurate.  
We cannot guarantee it's accuracy. Interested persons should make and on their own enquires.