

ACTUAL VIEW



2007/28 Zetland Avenue Zetland NSW

2 2 1

Soaring 20 storeys high, The Frederick offers an unparalleled vantage point to behold the mesmerizing city skyline, gladesville bridge and the serene park life below. Residents are treated to a host of premium amenities, including access to a state-of-the-art gym, a convenient business center, and an exclusive sky lounge perfect for entertaining or simply unwinding amidst the clouds. Convenience is key at The Frederick, with Woolworths just 300 meters away and Green Square Train Station in close proximity, providing a quick 3-minute commute to the heart of the city (Central Station). Additionally, residents are a stone's throw away from the Green Square Library and only 650 meters from the Gunyama Park Aquatic and Recreation Centre, offering endless opportunities for leisure and recreation. Nestled amidst the picturesque Drying Green parkland, The Frederick enjoys an ideal

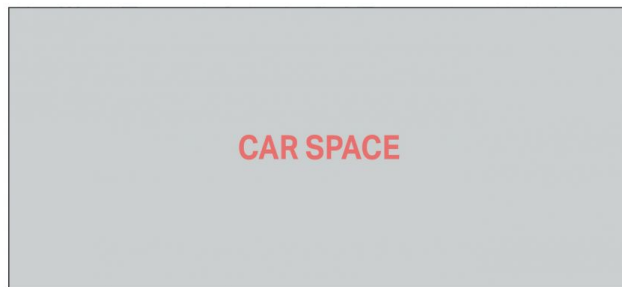
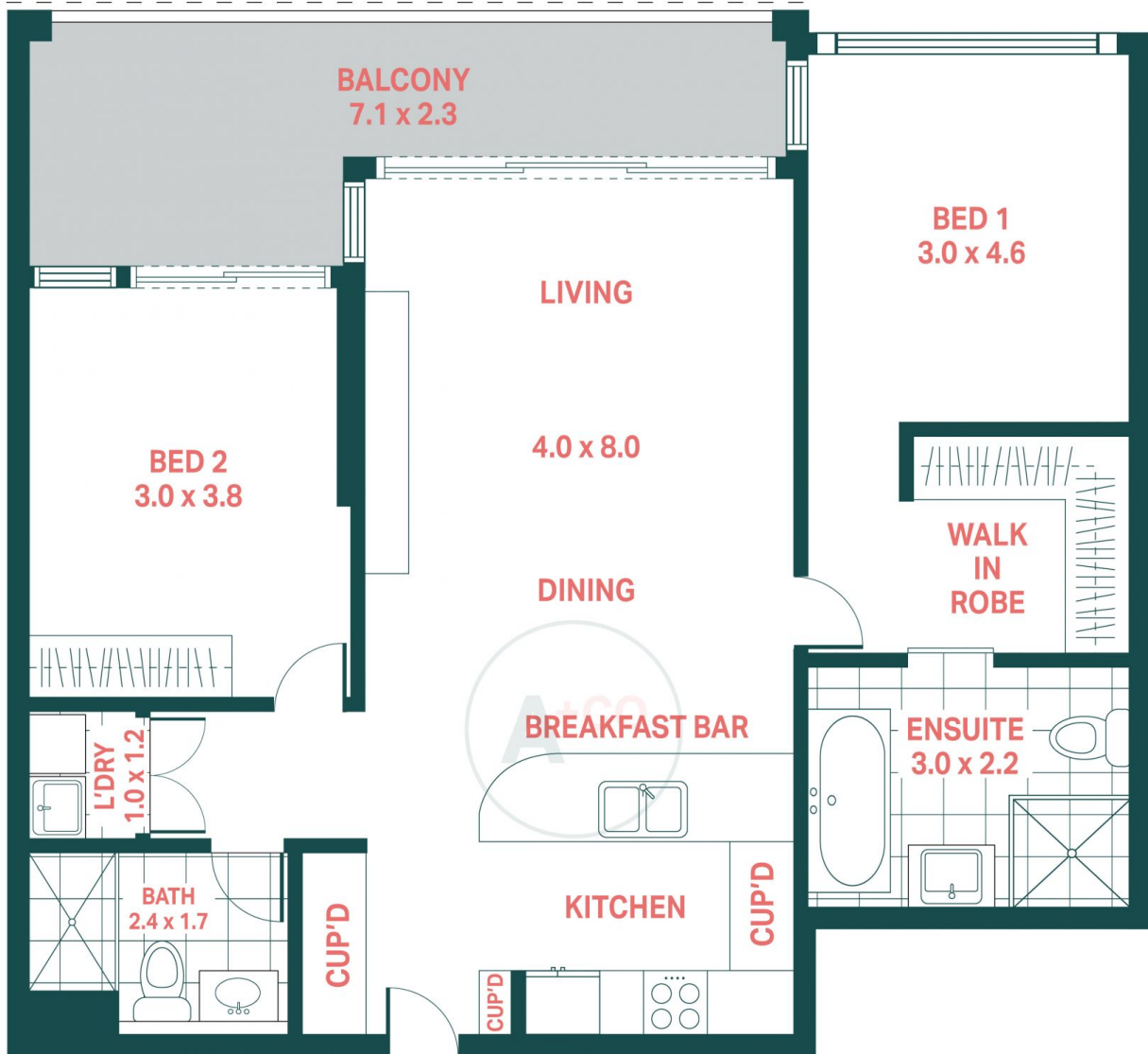
View : <https://www.agentsandco.com.au/sale/nsw/easter-n-suburbs/zetland/residential/apartment/7940666>



Nick Papas
02 9314 2100



Natalie Vega
02 9314 2100



2007/28 Zetland Avenue, Zetland

Agents^{+CO}

Scale in metres.
Indicative only. All information contained herein is obtained from sources we believe to be accurate.
We cannot guarantee it's accuracy. Interested persons should make and on their own enquires.