



## 23A Lasseter Avenue Chifley NSW

4 3 3

Behold breathtaking vistas of the bay from this exquisite new duplex, spanning three levels of luminous space. Designed for both relaxation and recreation, it features numerous areas for families to unwind and entertain. With its impeccable craftsmanship, modern design elements, and cutting-edge construction, this residence offers an unparalleled retreat for discerning homeowners.

Crafted for modern living, this residence welcomes abundant natural light, refreshing breezes, and seamless indoor-outdoor flow. Its expansive layout includes a central elevator connecting directly to the generous triple garage. Nestled in a sought-after residential enclave, this home is conveniently located near Chifley Sports Reserve, parks, and Chifley Public School, with the pristine sands of Malabar and Little Bay beaches just moments away.

**Price** : For Sale

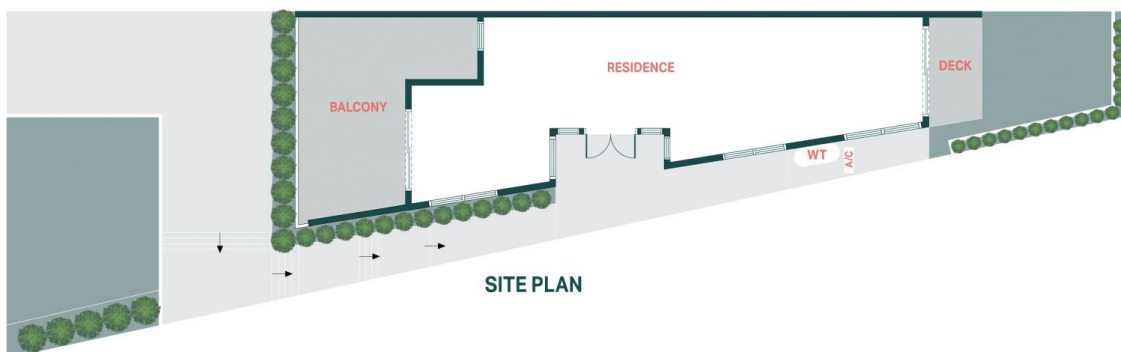
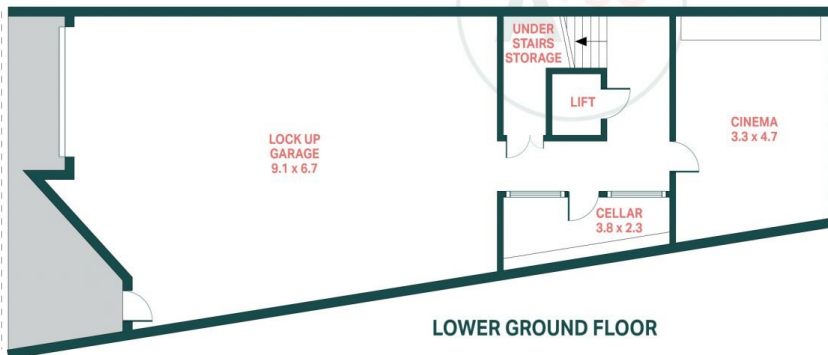
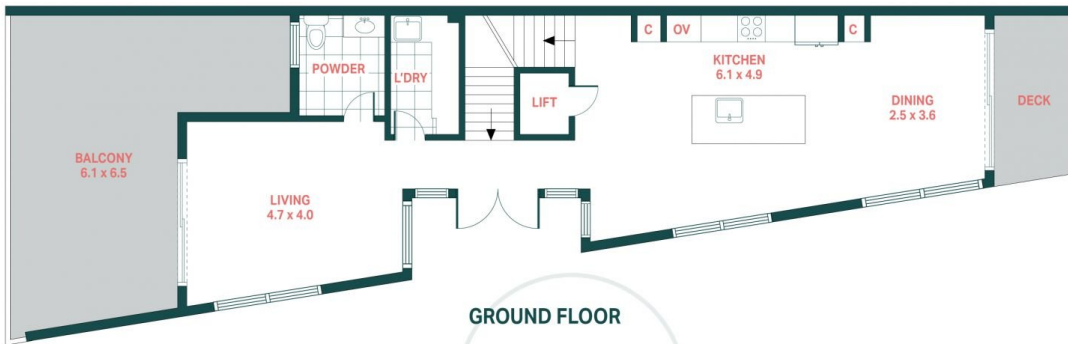
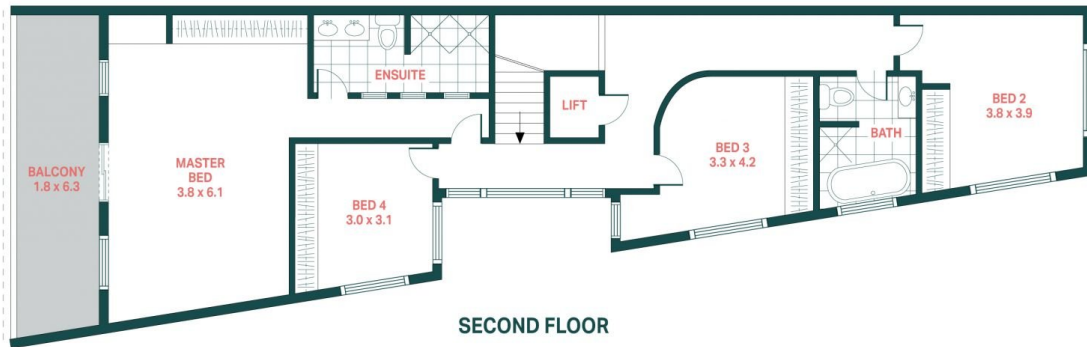
**View** : <https://www.agentsandco.com.au/sale/nsw/eastern-suburbs/chifley/residential/semi-detached/7993864>



**Clay Chigwidden**  
02 9314 2100



**Nick Papas**  
02 9314 2100



## 23A Lasseter Avenue, Chifley

Agents<sup>+</sup>CO

Scale in metres.  
Indicative only. All information contained herein is obtained from sources we believe to be accurate.  
We cannot guarantee its accuracy. Interested persons should make and on their own enquires.