



323/97 Boyce Road Maroubra NSW

2 2 1

The Lifestyle:

Superbly located in a heart of Maroubra Junction and just minutes walk from sparkling waters of Maroubra beach this massive apartment located within secure building of famous Pacific Square complex.

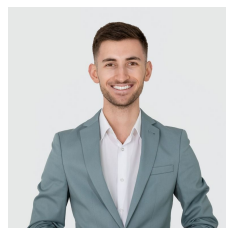
Type : Apartment

View : <https://www.agentsandco.com.au/lease/nsw/east-ern-suburbs/maroubra/residential/apartment/818775>

Property Features Include:

- * Spacious split level, two bedroom apartment (120 square meters)
- * Located above Pacific Square Maroubra Junction
- * Coles and ALDI supermarkets with many specialty shops at your doorstep
- * Two large bedrooms on different levels, both with built-ins and stylish bathrooms

[For full version visit the website](#)



Anthony Schembri
aNT



Eleni Roumanous
02 9314 2100