



2/20 Jauncey Place Hillsdale NSW

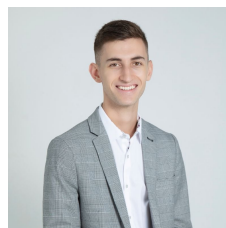
2 1 1

The Lifestyle;
Welcome to this beautifully updated ground-floor apartment in the heart of Hillsdale. Situated in a boutique block of just six residences, this property offers a rare combination of convenience, style, and modern comfort.

Type : Apartment
View : <https://www.agentsandco.com.au/lease/nsw/east-ern-suburbs/hillsdale/residential/apartment/8195444>

Property Features Include;
+ Open plan living area with tiled flooring and lots of natural light
+ Own fully fenced courtyard/outdoor space
+ Modern kitchen with stainless appliances and gas cooking, integrated laundry
+ Plantation shutters, reverse cycle air-conditioning gas heating outlet

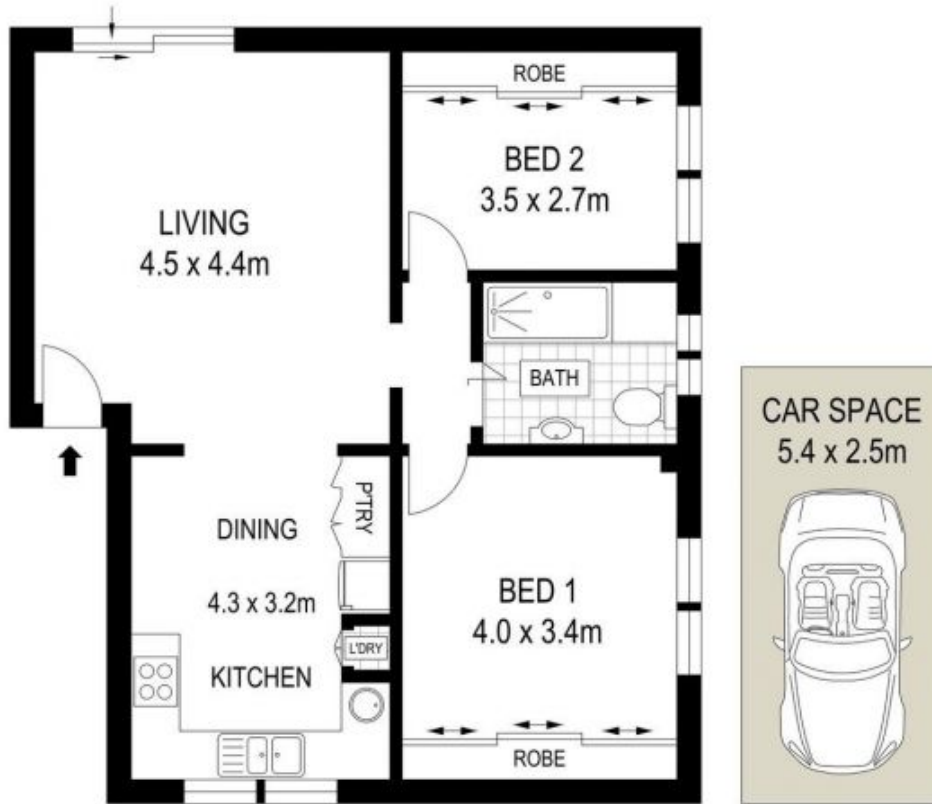
[For full version visit the website](#)



Anthony Schembri
02 9314 2100



Eleni Roumanous
02 9314 2100



GROUND FLOOR



2/20 Jauncey Place, Hillsdale

Disclaimer: Floor plans / site plans are intended as an approximate guide only. No representations or warranties of any nature are given or intended and any person or company using this information other than as a guide should always rely on their own enquiries. Proudly supported by www.mypropertymedia.com.au for all your marketing purposes.