



32 Wark Avenue Pagewood NSW

7 4 3

The Lifestyle;

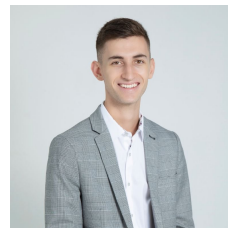
Presenting an immaculate double brick home, this property combines a flexible floor plan and generous proportions with high-quality finishes, creating an ideal environment for family living and entertaining. Designed to emphasise family living and entertaining. Multiple living areas offer ample space for gatherings. Surrounded by leafy pocket parks and recreational parkland, this high-growth inner east hotspot makes an ideal alternative to neighbouring suburbs of Kensington and Kingsford with close proximity to Mount Sinai College, UNSW David Phillips Sport Field, & local beaches. Situated on a peaceful street with a desirable aspect, this family retreat is steps from numerous parks and minutes to Bonnie Doon Golf Club, Jellicoe Park,

Type : House

Land Size : 467.9 sqm

View : <https://www.agentsandco.com.au/lease/nsw/eastern-suburbs/pagewood/residential/house/8249794>

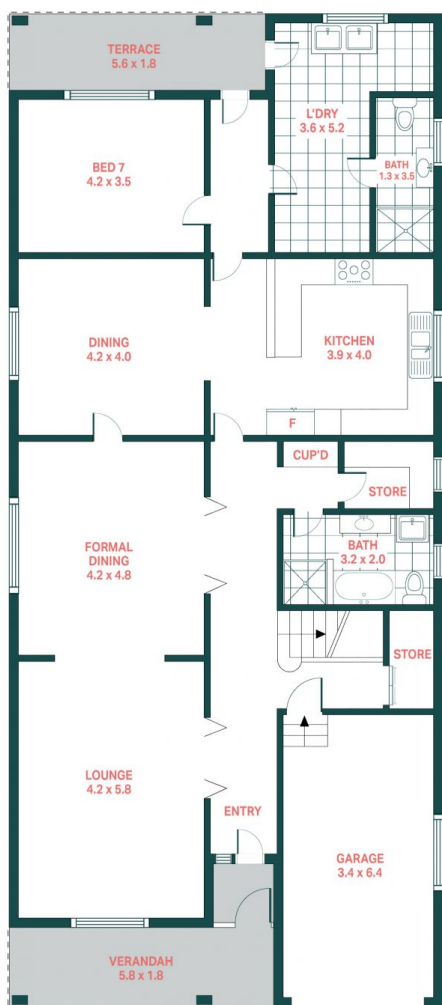
[For full version visit the website](https://www.agentsandco.com.au)



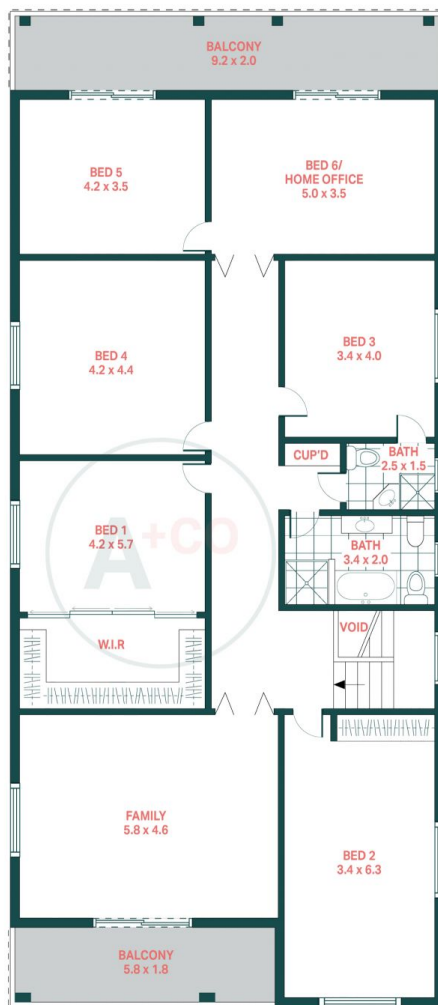
Anthony Schembri
0421 113 562



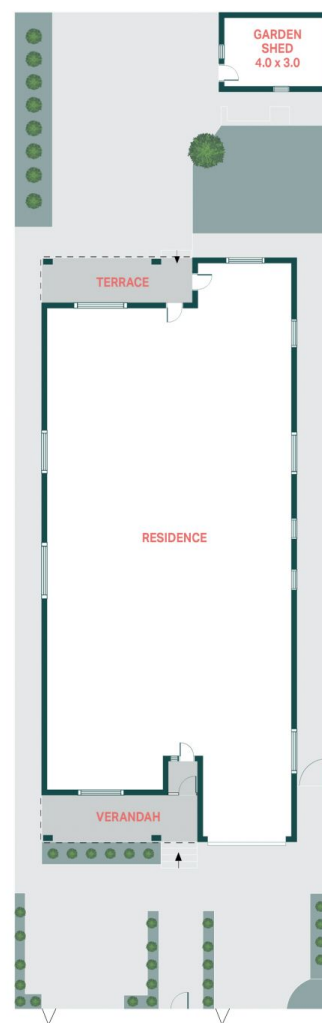
Eleni Roumanous
02 9314 2100



GROUND FLOOR



FIRST FLOOR



SITE PLAN

32 Wark Avenue, Pagewood

Agents⁺CO

Scale in metres.
Indicative only. All information contained herein is obtained from sources we believe to be accurate.
We cannot guarantee it's accuracy. Interested persons should make and on their own enquires.