

## 158 Robey Street Matraville NSW

4 3 2

Blending contemporary flair with classic coastal elegance, this newly built Torrens-title residence has been architecturally crafted to offer a luxurious retreat on the edge of Heffron Park. Designed over two levels with a private entrance via O'Connell Avenue, the impeccably appointed home showcases a striking monochrome palette that enhances the light-filled interiors. Finishes in White Oak, Elba marble, and brass accents add a touch of glamour, while the thoughtfully designed layout is ideal for family living. A showstopping kitchen serves as the heart of the home, complementing the expansive open-plan living and entertaining areas. The upper level features four double bedrooms, a dedicated study, and a private master suite retreat.

**Type** : House

**Price** : \$ 2,610,000

**View** : <https://www.agentsandco.com.au/sale/nsw/eastern-suburbs/matraville/residential/house/8254546>

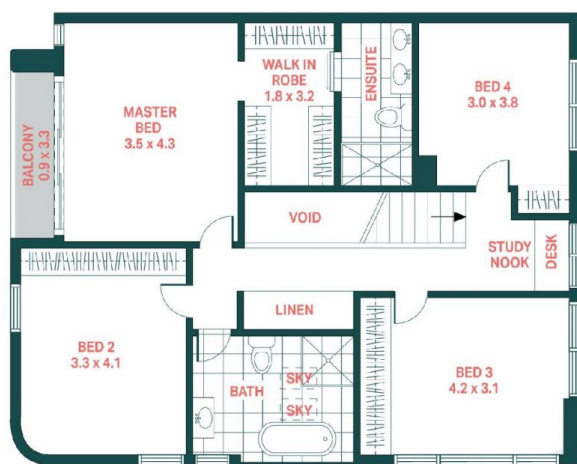


**Clay Chigwidden**  
02 9314 2100

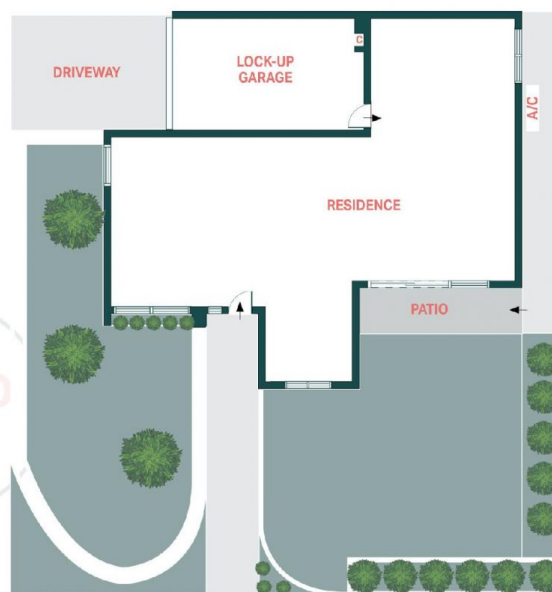


**Nick Papas**  
02 9314 2100

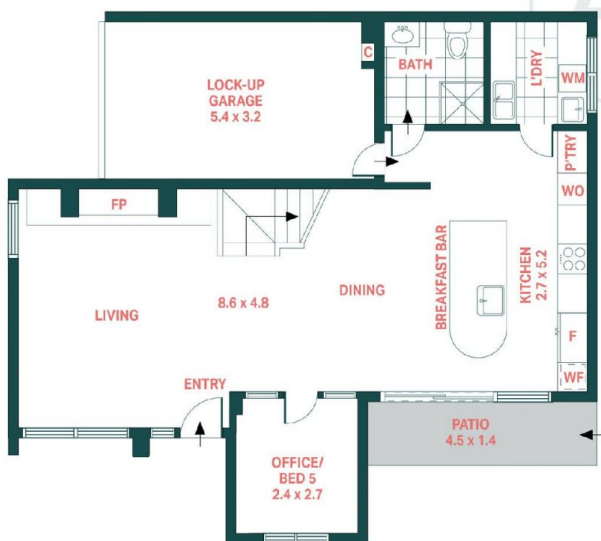
[For full version visit the website](https://www.agentsandco.com.au)



FIRST FLOOR



SITE PLAN



GROUND FLOOR

## 158 Robey Street, Matraville

Agents<sup>+CO</sup>

Scale in metres.  
Indicative only. All information contained herein is obtained from sources we believe to be accurate.  
We cannot guarantee it's accuracy. Interested persons should make and on their own enquires.