



1/102-106 Boyce Road Maroubra NSW

2 2 1

Nestled in the sought-after northern side of 'Nexus', this beautifully elevated two-bedroom apartment offers a peaceful retreat with unbeatable convenience. Bathed in natural light, every room opens to the north, creating a seamless indoor-outdoor flow that feels both airy and inviting.

Step onto the full-width sun deck, where lush leafy views provide the perfect backdrop for morning coffees, relaxed evenings, or entertaining friends. Positioned directly opposite the vibrant Pacific Square precinct, you're just moments from gourmet delis, fresh produce, and cozy cafés. Frequent buses make city commutes a breeze, while top-rated schools like Mount Sinai College are within easy

[For full version visit the website](https://www.agentsandco.com.au)

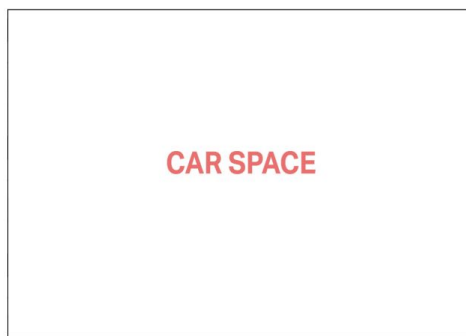
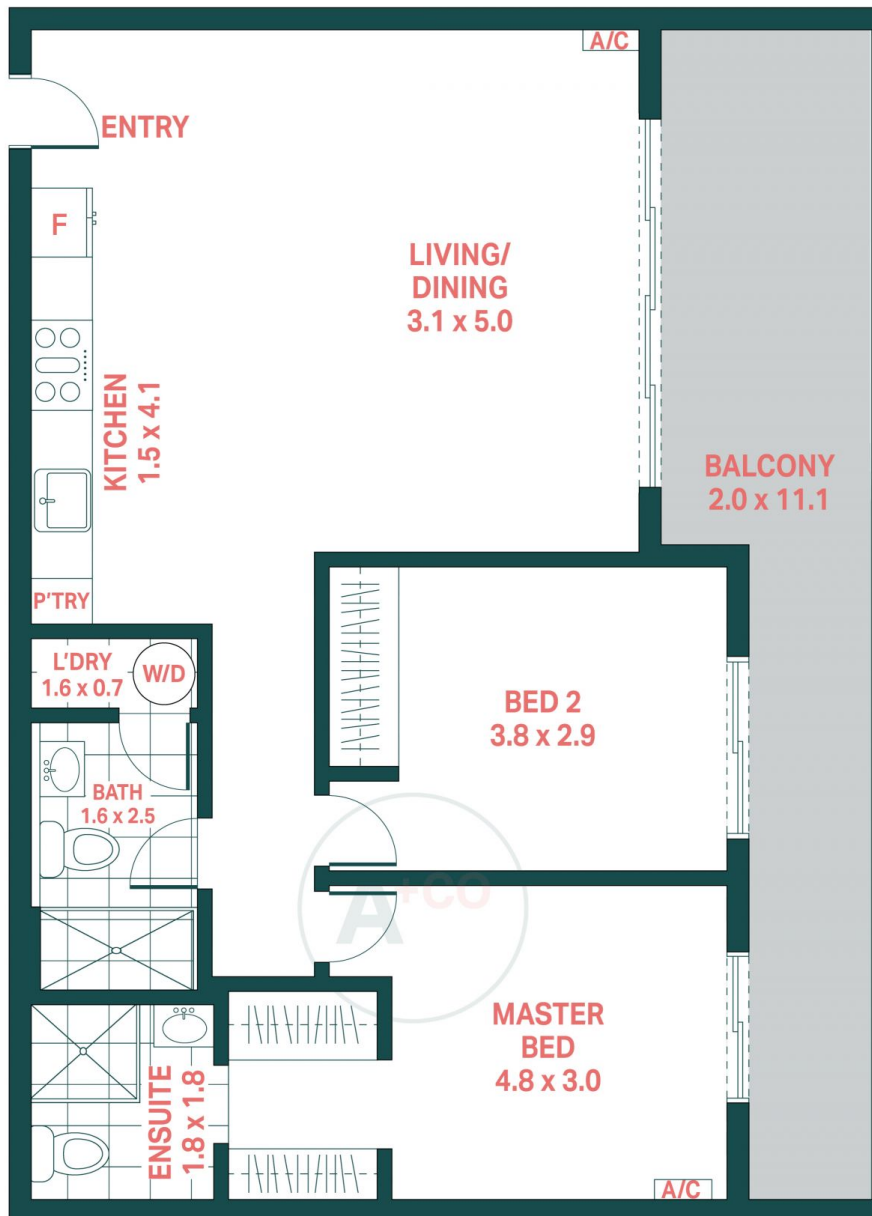
**Type** : Apartment  
**Price** : For Sale  
**Land Size** : 107 sqm  
**View** : <https://www.agentsandco.com.au/sale/nsw/eastern-suburbs/maroubra/residential/apartment/8293349>



**Nick Papas**  
02 9314 2100



**Natalie Vega**  
02 9314 2100



(NOT IN POSITION)

**1/102-106 Boyce Road, Maroubra**

**Agents<sup>+CO</sup>**

Scale in metres.  
 Indicative only. All information contained herein is obtained from sources we believe to be accurate.  
 We cannot guarantee it's accuracy. Interested persons should make and on their own enquires.