



## 12 Moverly Road Maroubra NSW

3 1

### The Lifestyle:

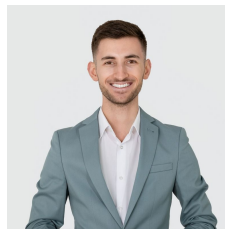
Filled with light, period features and full of character this home is perfect for couples or a family. It's conveniently situated within walking distance of Maroubra Junction, Latham Park Tennis Centre, Central Park Playground and Maroubra Junction Primary School.

### Property Features Include:

- + Three bedrooms with sizable built-in robes in two
- + Open plan kitchen and dining
- + Lounge room with sun-room or study nook
- + Modern bathroom
- + Wooden floorboards & period ceilings
- + Internal laundry

**Type** : House

**View** : <https://www.agentsandco.com.au/lease/nsw/east-ern-suburbs/maroubra/residential/house/8318134>



**Anthony Schembri**  
aNT



**Eleni Roumanous**  
02 9314 2100

[For full version visit the website](https://www.agentsandco.com.au)