



## 923 Anzac Parade Maroubra NSW

4 2 2

Completely transformed throughout, this expansive double-storey home offers a seamless blend of character and contemporary style. Immaculately presented and flooded with natural light, it's the ideal family retreat, combining comfort and modern living with effortless entertaining spaces. Perfectly positioned in the heart of Maroubra, this property provides easy access to Heffron Park, Westfield Eastgardens, Maroubra Junction, local schools, golf courses, and Maroubra Beach, making it a fantastic choice for growing families, up-sizers, or those seeking a lifestyle change.

+ Beautifully renovated full-brick semi across two light-filled levels.

[For full version visit the website](https://www.agentsandco.com.au/sale/nsw/eastern-suburbs/maroubra/residential/semi-detached/8320178)

**Type** : Semi Detached

**Price** : For Sale

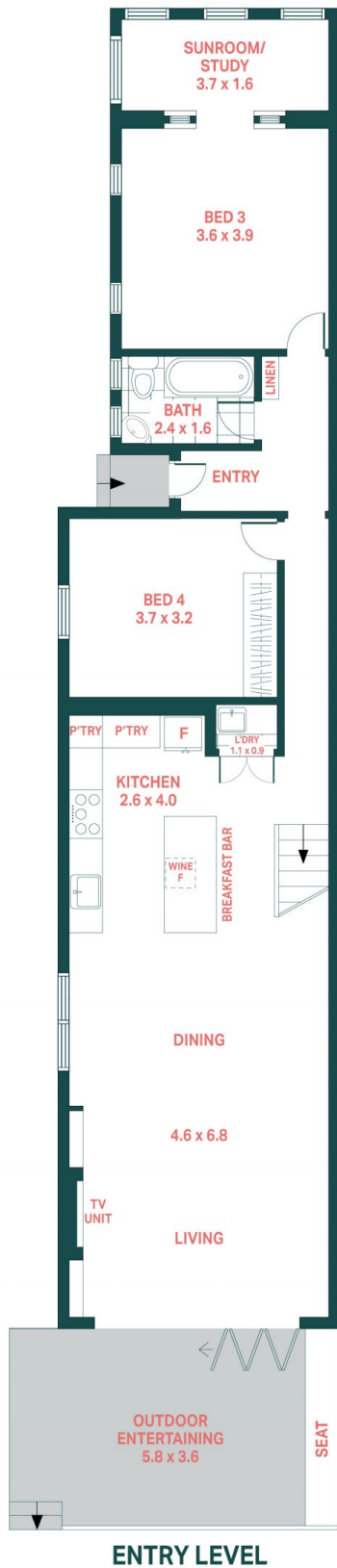
**View** : <https://www.agentsandco.com.au/sale/nsw/eastern-suburbs/maroubra/residential/semi-detached/8320178>



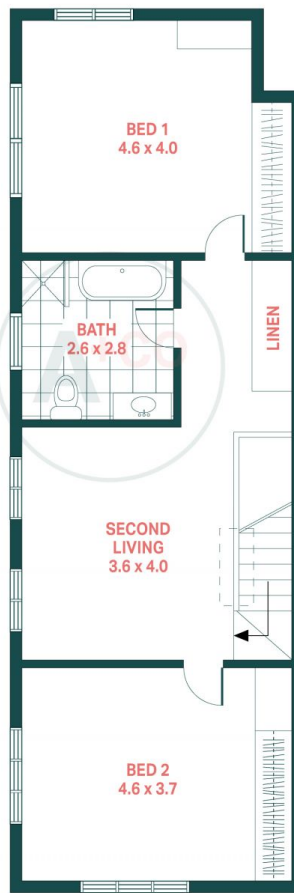
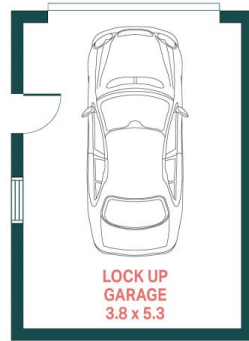
**Nick Papas**  
02 9314 2100



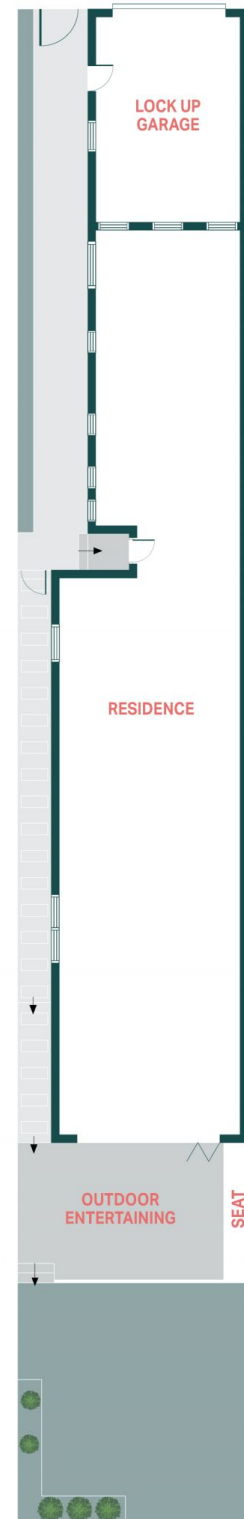
**Natalie Vega**  
02 9314 2100



ENTRY LEVEL



LEVEL ONE



SITE PLAN

## 923 Anzac Parade, Maroubra

Agents<sup>+CO</sup>

Scale in metres.  
Indicative only. All information contained herein is obtained from sources we believe to be accurate.  
We cannot guarantee it's accuracy. Interested persons should make and on their own enquires.