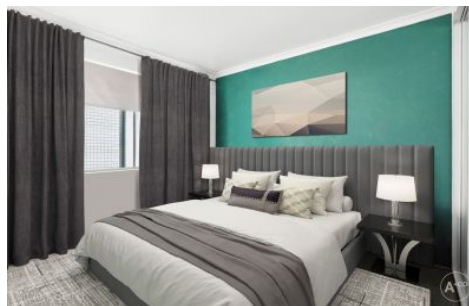




Virtually Styled



5/29 Brittain Crescent Hillsdale NSW

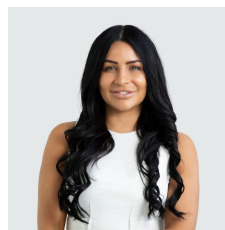
2 1 1

Ideally positioned on the top floor in a sought-after and ultra-convenient locale, this beautifully renovated two-bedroom apartment offers an exceptional lifestyle opportunity. Set within a boutique security block of just six residences, it enjoys a peaceful yet central setting—just a short 1.1 kms to Westfield Eastgardens and 500m to Southpoint Shopping Centre, with frequent City and Bondi Junction buses nearby. Moments from the open green spaces of Heffron Park and close to eastern suburbs beaches, this address also boasts effortless road access to the airport and Sydney CBD.

Whether you're looking for your first home, a quality investment, or a stylish city-fringe base, this residence ticks

[For full version visit the website](https://www.agentsandco.com.au)

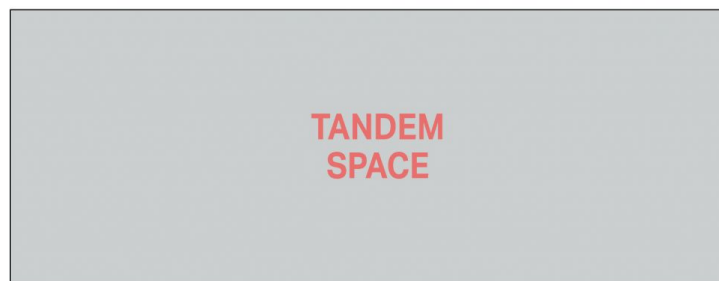
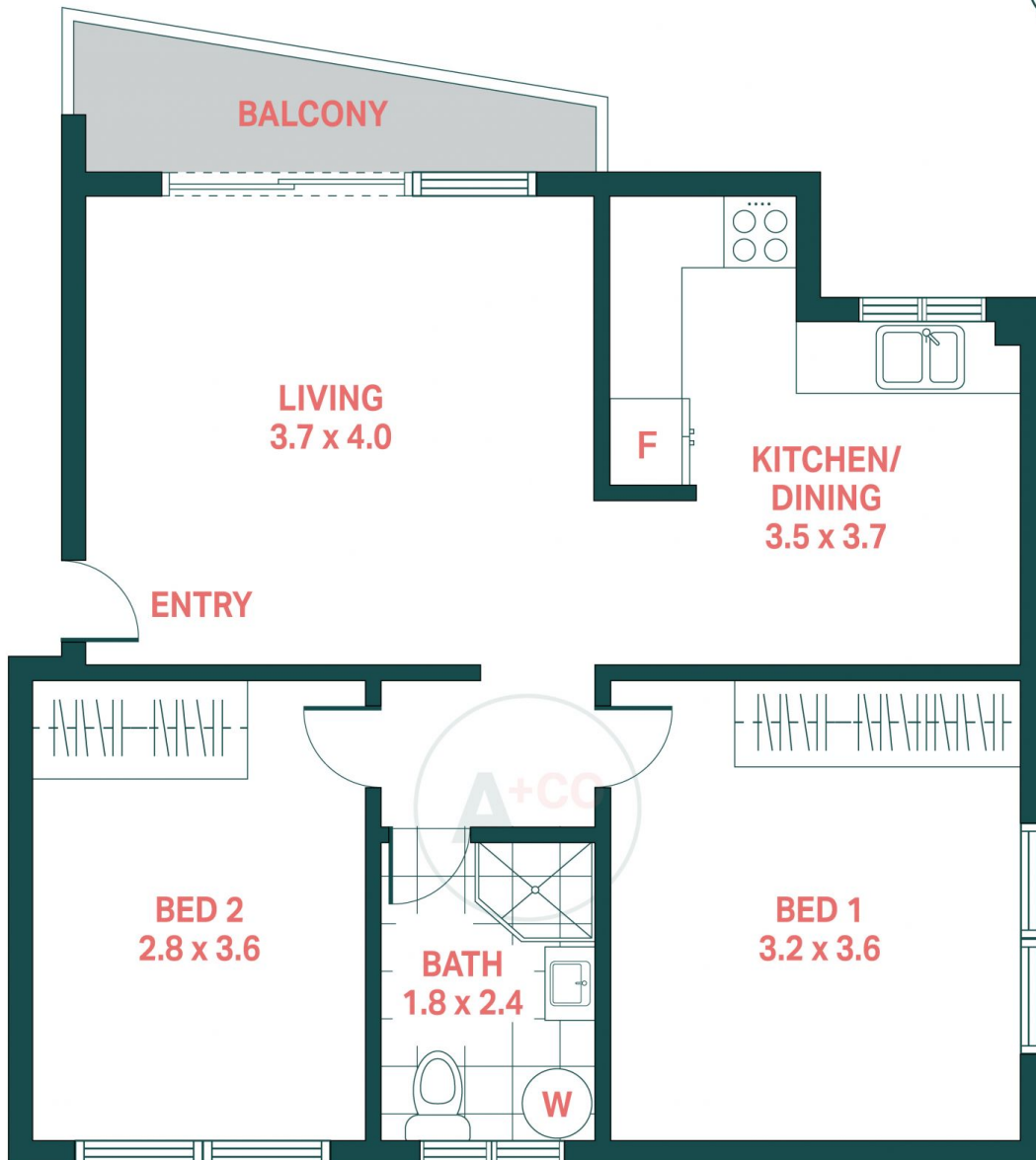
Type : Apartment
Price : \$ 740,000
Land Size : 79 sqm
View : <https://www.agentsandco.com.au/sale/nsw/eastern-suburbs/hillsdale/residential/apartment/8420176>



Natalie Vega
02 9314 2100



Nick Papas
02 9314 2100



5/29 Brittain Crescent, Hillsdale

Agents^{+CO}

Scale in metres.
Indicative only. All information contained herein is obtained from sources we believe to be accurate.
We cannot guarantee it's accuracy. Interested persons should make and on their own enquires.