



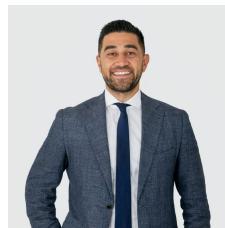
28 Paine Street Maroubra NSW

3 2 1

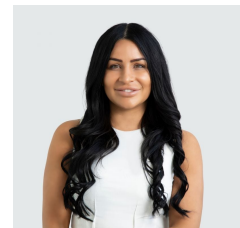
This Absolutely stunning home offers the perfect blend of style, quality and functionality. From the moment you step inside, you'll be struck by the meticulous craftsmanship and thoughtful design, with premium finishes throughout - this is a move-in ready haven for modern family life. Set in a quiet, leafy neighbourhood surrounded by parkland, and just 650m from Westfield Eastgardens, this home delivers both tranquility and convenience.

Built by the award-winning Willis Building Pty Ltd, recipients of the Master Builders Association Excellence in Housing Award, this residence showcases engineered oak floorboards, adding warmth and sophistication to the entire space. The open-plan design features shadow line ceilings,

Type : Semi Detached
Land Size : 285 sqm
View : <https://www.agentsandco.com.au/sale/nsw/eastern-suburbs/maroubra/residential/semi-detached/8438566>

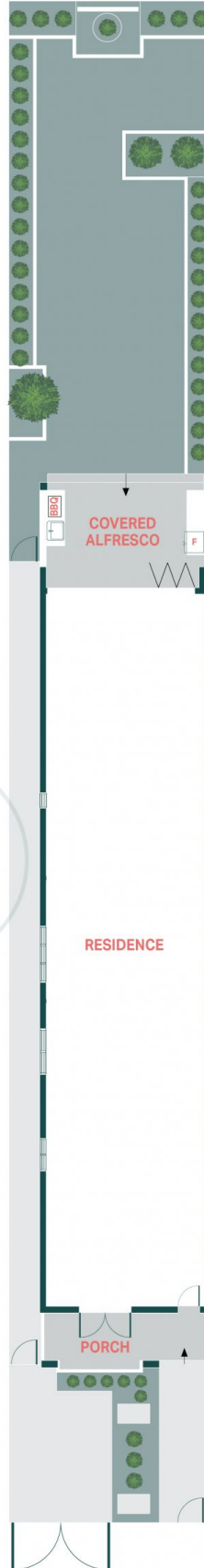
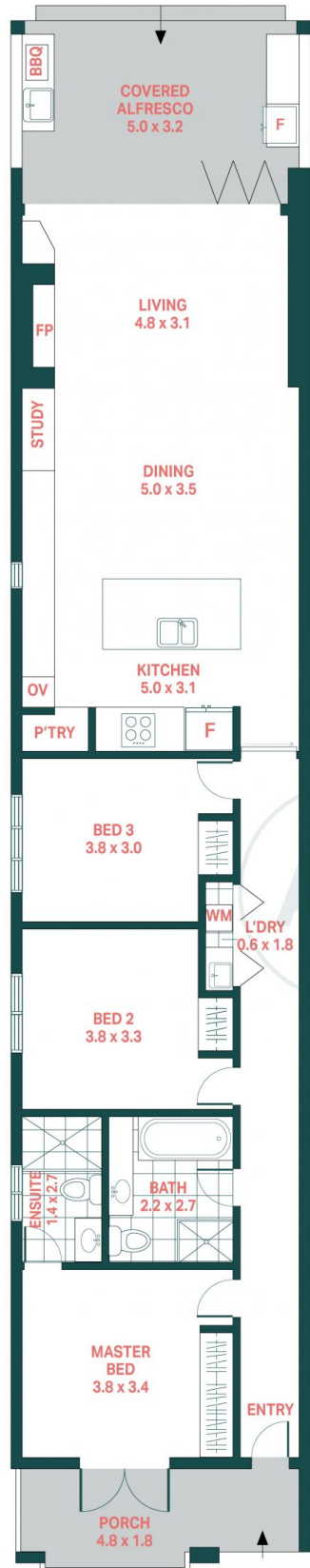


Nick Papas
02 9314 2100



Natalie Vega
02 9314 2100

[For full version visit the website](https://www.agentsandco.com.au)



28 Paine Street, Maroubra

SITE PLAN

Agents^{+CO}

Scale in metres.
 Indicative only. All information contained herein is obtained from sources we believe to be accurate.
 We cannot guarantee it's accuracy. Interested persons should make and on their own enquires.