



C36/1-7 Daunt Avenue Matraville NSW

2 🛏 2 🚿 2 🚗

The Lifestyle;

Positioned in the highly regarded "The Peninsula" complex, this beautifully appointed north-facing apartment captures elevated city views and offers a seamless blend of comfort, style and convenience. Enjoy peace and privacy while being moments from vibrant shopping, cafés, eateries and transport links.

Property Features Include;

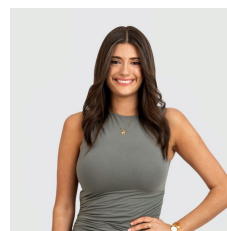
- + Bright and spacious open-plan living and dining area
- + Generous north-facing balcony with sweeping city outlooks - perfect for entertaining
- + Sleek gas kitchen with stone benchtops, dishwasher and oversized breakfast bar

[For full version visit the website](https://www.agentsandco.com.au)

Type : Apartment

Land Size : 140 sqm

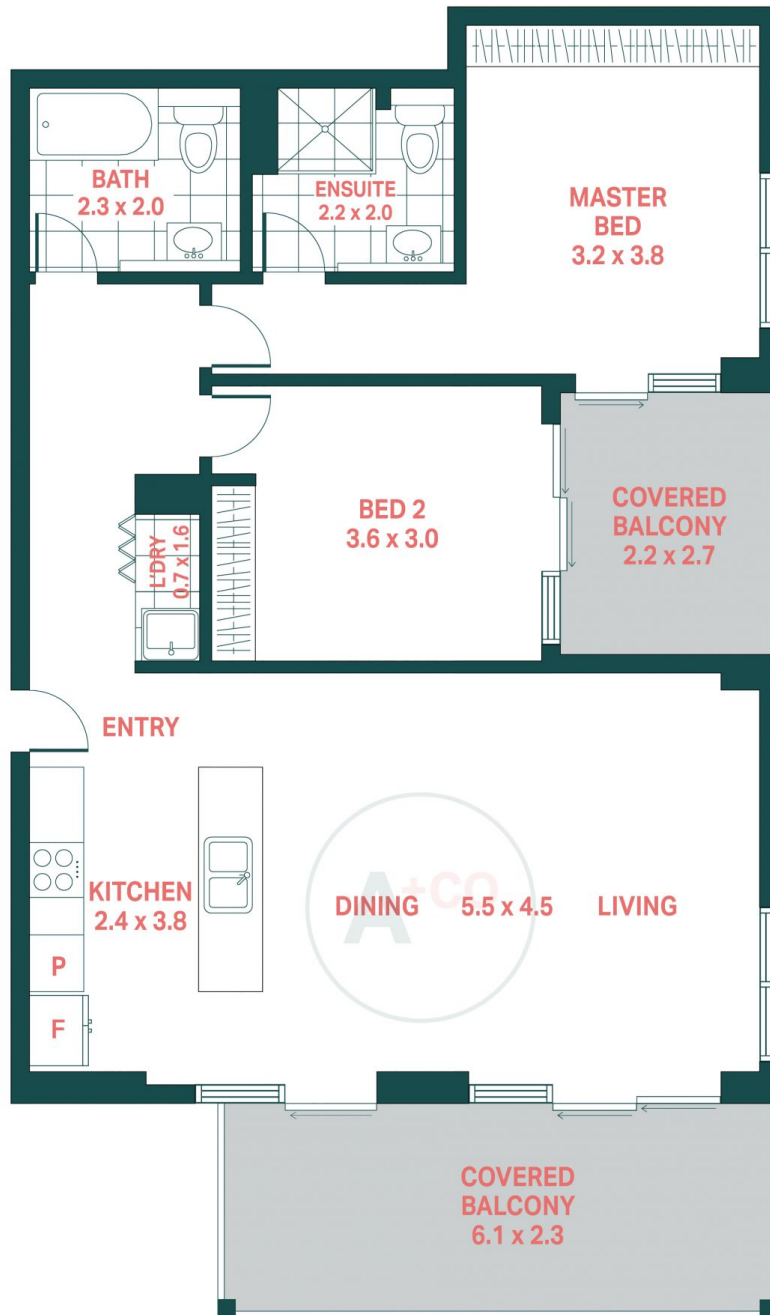
View : <https://www.agentsandco.com.au/lease/nsw/eastern-suburbs/matraville/residential/apartment/8461904>



Julia Riolo
02 9314 2100



Eleni Roumanous
02 9314 2100



LEVEL FIVE



c36/1-7 Daunt Avenue, Matraville

Agents^{+CO}

Scale in metres.
 Indicative only. All information contained herein is obtained from sources we believe to be accurate.
 We cannot guarantee it's accuracy. Interested persons should make and on their own enquires.