



802A/22-28 Gardeners Road Kingsford NSW

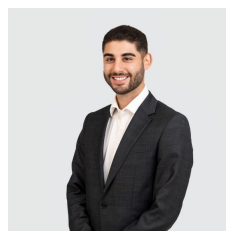
1 1 1

Perched high on level eight of a contemporary boutique building, this stylish studio apartment delivers the perfect blend of comfort, convenience, and modern living. Bathed in natural light and elevated above the treetops, it captures sweeping district views from both the living space and the generous balcony. Inside, clean contemporary finishes include warm timber flooring, a sleek stone topped kitchen with premium appliances, and a pristine hotel style bathroom. Designed for effortless living, the home sits moments from public transport, shops and UNSW, making it an enviable lifestyle or investment opportunity.

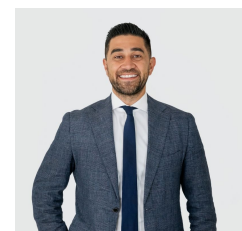
Thoughtfully planned and impeccably maintained, the apartment offers a free flowing open plan layout, an

[For full version visit the website](https://www.agentsandco.com.au)

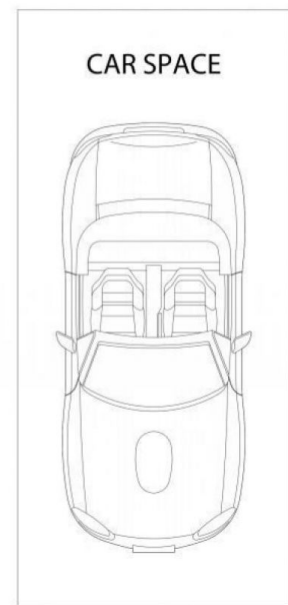
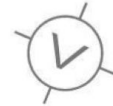
Type : Studio
Land Size : 66 sqm
View : <https://www.agentsandco.com.au/sale/nsw/eastern-suburbs/kingsford/residential/studio/8612702>



Eden Elmowy
02 9314 2100



Nick Papas
02 9314 2100



BASEMENT TWO

802A/22-28 Gardeners Road, Kingsford

Scale in metres.
Indicative only. All information contained herein is obtained from sources we believe to be accurate.
We cannot guarantee its accuracy. Interested persons should make and on their own enquiries.