

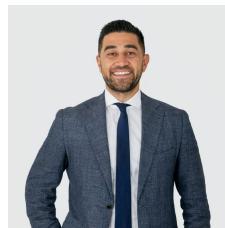
303/228B Bunnerong Road Hillsdale NSW

2 2 2

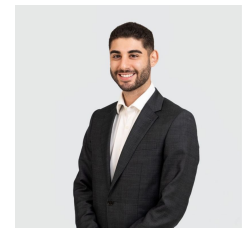
Beautifully positioned on the top two levels of a modern boutique complex, this oversized dual-level apartment delivers space, light and seamless indoor/outdoor living. With two balconies capturing sweeping district outlooks toward Heffron Park and the city skyline, the home offers an exceptional sense of openness rarely found in apartment living.

Upstairs, the open plan living and dining zone is bathed in natural light and flows to a large entertainer's terrace, complemented by a sleek stone-finished kitchen. Downstairs, two spacious bedrooms include a privately set master suite with walk-in wardrobe and ensuite, plus an additional living area ideal as a study, retreat or media

Type : Apartment
Land Size : 103 sqm
View : <https://www.agentsandco.com.au/sale/nsw/eastern-suburbs/hillsdale/residential/apartment/8626061>

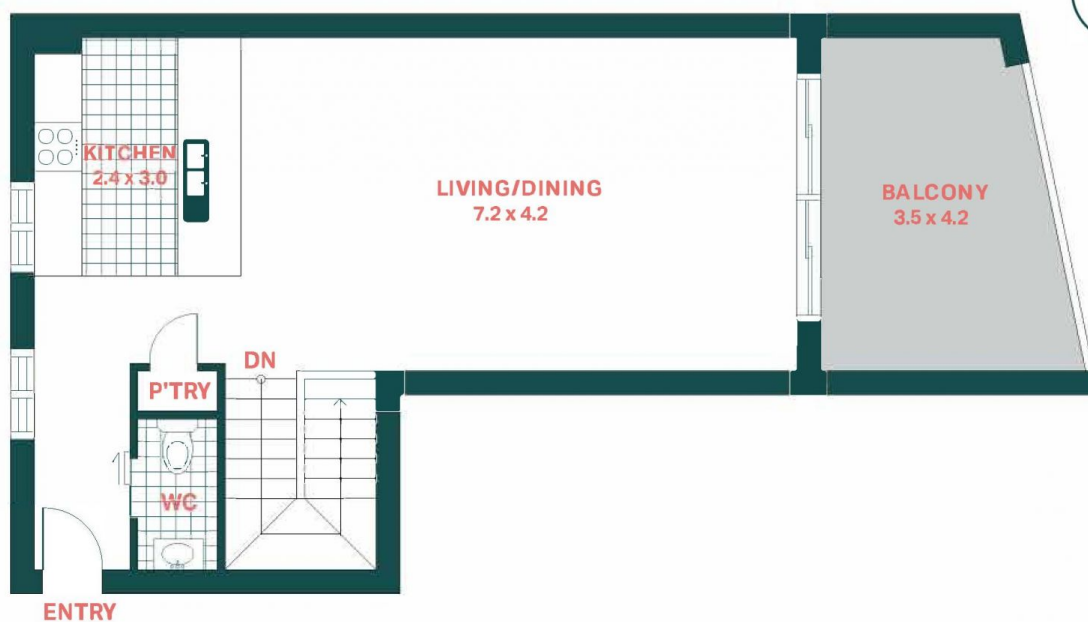


Nick Papas
02 9314 2100

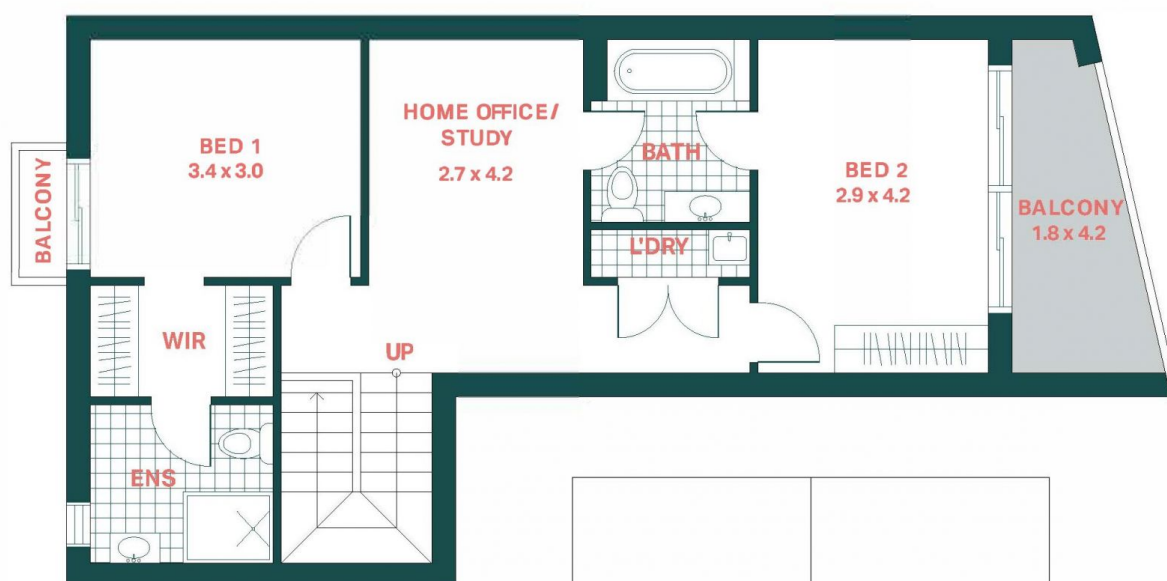


Eden Elmowy
02 9314 2100

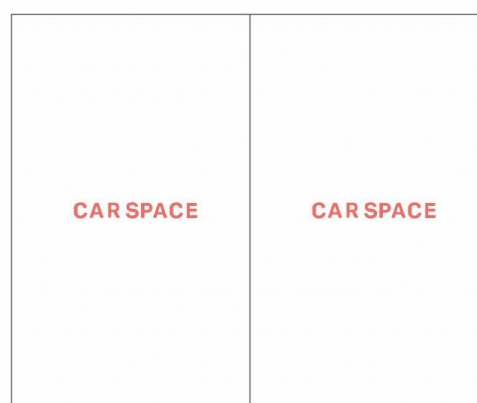
[For full version visit the website](https://www.agentsandco.com.au)



LEVEL 8 UPPER LEVEL



LEVEL 7 LOWER LEVEL



303/228B Bunnerong Road, Hillsdale

Agents^{+CO}

Scale in metres.
Indicative only. All information contained herein is obtained from sources we believe to be accurate.
We cannot guarantee it's accuracy. Interested persons should make and on their own enquires.