



1604/39 Rhodes Street Hillsdale NSW

2 2

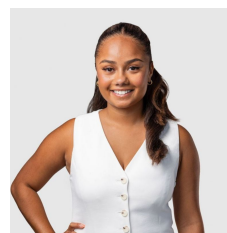
Conveniently located within walking distance to parks, beaches & transport, this apartment is the perfect mix of comfort and lifestyle - ideal for families and professionals seeking the ultimate in apartment living.

**Type** : Apartment

**View** : <https://www.agentsandco.com.au/lease/nsw/east-ern-suburbs/hillsdale/residential/apartment/8627041>

**Property Features:**

- + Spacious 2-bedroom layout with additional large study
- + Generous open-plan living and dining area filled with natural light
- + Large private balcony - perfect for relaxing or entertaining
- + Designer kitchen with stone benchtops, stainless steel appliances & dishwasher
- + Tiled bathrooms and en-suite with premium fittings
- + Walk-in & Built-in wardrobes



**Jocelyn Peters**  
02 9314 2100



**Paul Dilles**  
02 9314 2100

[For full version visit the website](#)



CAR SPACE  
2.5 x 5.5m



CAR SPACE  
2.5 x 5.5m



## 1604/39 RHODES STREET, HILLSDALE

Scale in metres.

Indicative only. All information contained herein is obtained from sources we believe to be accurate. We cannot guarantee its accuracy. Interested persons should make and on their own enquiries.