



5/928-930 Anzac Parade Maroubra NSW

2 2 1

The Lifestyle

Sun-drenched, spacious living with an oversized balcony perfect for relaxing or entertaining. Ideally positioned in the heart of Maroubra Junction, this apartment offers unbeatable convenience, just moments from public transport, directly opposite Pacific Square, and close to beautiful beaches, lush parks, renowned golf courses, and a vibrant selection of cafés and restaurants.

Features

- + Generously sized apartment with a spacious layout
- + Oversized balcony, ideal for entertaining or relaxing
- + Built-in wardrobes in all bedrooms for ample storage
- + Two modern bathrooms

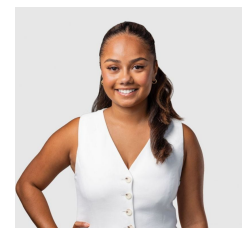
[For full version visit the website](#)

Type : Apartment

View : <https://www.agentsandco.com.au/lease/nsw/eastern-suburbs/maroubra/residential/apartment/8676538>



Ally Masi
02 9314 2100



Jocelyn Peters
02 9314 2100