



2/112-114 Boyce Maroubra NSW

2 1 1

Perfectly positioned in the sought-after "Margaret Place" complex, this well-located 2-bedroom courtyard apartment offers unbeatable convenience. Set in the heart of the Junction, you'll enjoy easy walking access to shops, cafes, restaurants, transport, and UNSW-right across from Pacific Square.

**Type** : Apartment

**Price** : \$950 pw

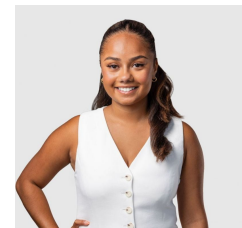
**View** : <https://www.agentsandco.com.au/lease/nsw/east-ern-suburbs/maroubra/residential/apartment/8688267>

- + Combined lounge/dining opening out onto a large entertainer's courtyard
- + Large granite kitchen with dishwasher
- + Both bedrooms with built-ins
- + Master bedroom with ensuite
- + Main bathroom with separate shower and bathtub
- + Includes outdoor pool

[For full version visit the website](https://www.agentsandco.com.au)



**Ally Masi**  
02 9314 2100



**Jocelyn Peters**  
02 9314 2100